

OTOP1 antibody



Catalog Number: 113511

Product name

OTOP1 antibody

Immunogen

[Human OTOP1 Recombinant protein \(His tag\)](#)

Specificity

Human, Mouse; other species not tested.

Antibody description

OTOP1 Rabbit Polyclonal antibody. Positive WB detected in mouse heart tissue. Observed molecular weight by Western-blot: 67 kDa

Preparation

This antibody was obtained by immunization of OTOP1 recombinant protein (Accession Number: NM_177998). Purification method: Antigen affinity purified.

Formulation

PBS with 0.1% sodium azide and 50% glycerol pH 7.3.

Storage

Store at -20°C. DO NOT ALIQUOT

Clonality

Polyclonal

Ig Type

Rabbit IgG

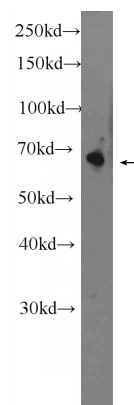
Applications

ELISA, WB

Dilutions

Recommended Dilution:
WB: 1:200-1:1000

Validations



mouse heart tissue were subjected to SDS PAGE followed by western blot with Catalog No:113511(OTOP1 Antibody) at dilution of 1:300