

# Occludin antibody

Catalog Number: 113466

## Product name

Occludin antibody

WB: 1:500-1:5000

IP: 1:200-1:2000

## Specificity

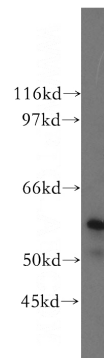
Human, Mouse, Rat; other species not tested.

IF: 1:10-1:100

## Antibody description

Occludin Rabbit Polyclonal antibody. Positive IF detected in A431 cells. Positive IP detected in mouse liver tissue. Positive WB detected in human liver tissue, human kidney tissue, mouse kidney tissue, mouse liver tissue, mouse skin tissue. Observed molecular weight by Western-blot: 59 kDa

## Validations



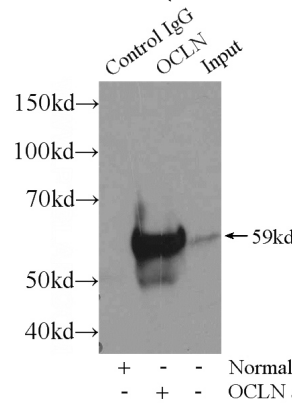
## Preparation

This antibody was obtained by immunization of  $^{14}$ C occludin recombinant protein (Accession Number: BC029886). Purification method: Antigen affinity purified.

human liver tissue were subjected to SDS PAGE followed by western blot with Catalog No:113466(ocLN antibody) at dilution of 1:600

## Formulation

PBS with 0.02% sodium azide and 50% glycerol pH 7.3.



## Storage

Store at -20°C. DO NOT ALIQUOT

## Clonality

Polyclonal

## Ig Type

Rabbit IgG

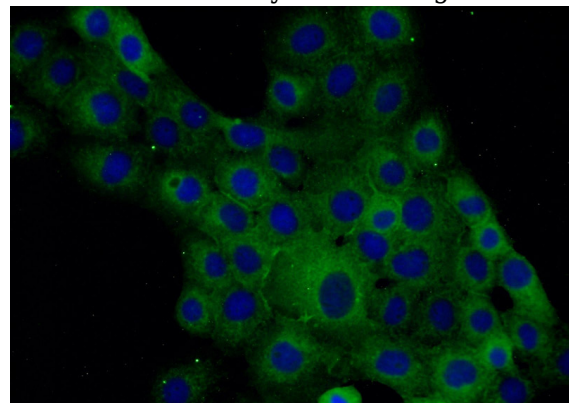
## Applications

ELISA, WB, IP, IF

## Dilutions

Recommended Dilution:

IP Result of anti-occludin (IP:Catalog No:113466, 3ug; Detection:Catalog No:113466 1:500) with mouse liver tissue lysate 6400ug.



# Occludin antibody



Catalog Number: 113466

---

Immunofluorescent analysis of A431 cells using Catalog No:113466(occludin Antibody) at dilution of 1:25 and Alexa Fluor 488-conjugated AffiniPure Goat Anti-Rabbit IgG(H+L)