

OSBPL10 antibody



Catalog Number: 113429

Product name

OSBPL10 antibody

IP: 1:200-1:2000

IHC: 1:20-1:200

Specificity

Human, Mouse, Rat; other species not tested.

IF: 1:10-1:100

Antibody description

OSBPL10 Rabbit Polyclonal antibody. Positive IHC detected in human colon cancer tissue. Positive IF detected in HepG2 cells. Positive IP detected in HeLa cells. Positive WB detected in HEK-293 cells. Observed molecular weight by Western-blot: 75-80kd, 64kd

Preparation

This antibody was obtained by immunization of OSBPL10 recombinant protein (Accession Number: NM_017784). Purification method: Antigen affinity purified.

Formulation

PBS with 0.02% sodium azide and 50% glycerol pH 7.3.

Storage

Store at -20°C. DO NOT ALIQUOT

Clonality

Polyclonal

Ig Type

Rabbit IgG

Applications

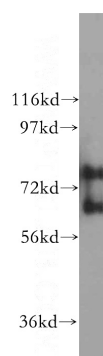
ELISA, WB, IHC, IF, IP

Dilutions

Recommended Dilution:

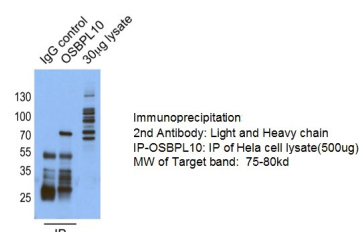
WB: 1:200-1:2000

Validations



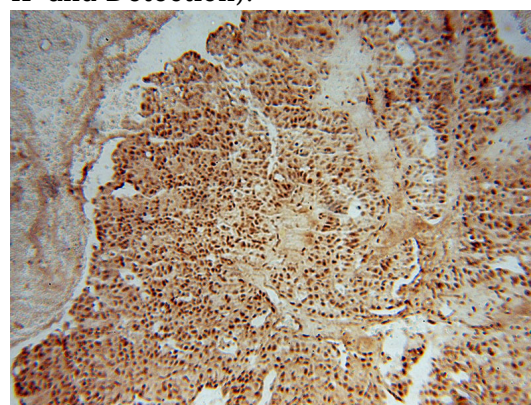
HEK-293 cells were subjected to SDS PAGE followed by western blot with Catalog No:113429(OSBPL10 antibody) at dilution of

IP & WB with HeLa Cell



1:400

IP result of anti-OSBPL10(Catalog No:113429 for IP and Detection).

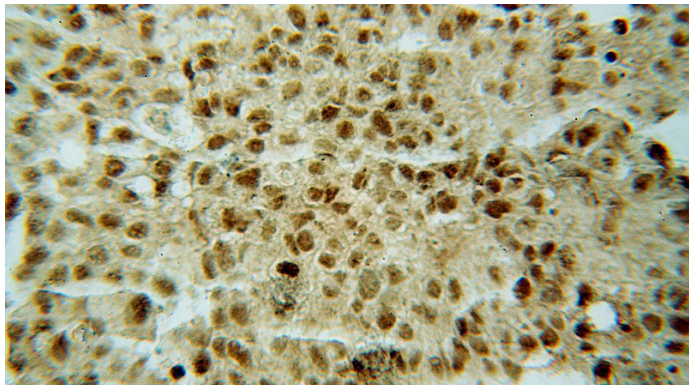


Immunohistochemical of paraffin-embedded

OSBPL10 antibody

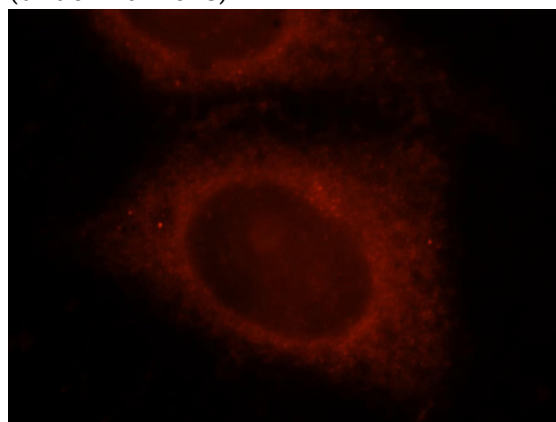
Catalog Number: 113429

human colon cancer using Catalog
No:113429(OSBPL10 antibody) at dilution of 1:50
(under 10x lens)



Immunohistochemical of paraffin-embedded
human colon cancer using Catalog
No:113429(OSBPL10 antibody) at dilution of 1:50

(under 40x lens)



Immunofluorescent analysis of HepG2 cells, using
OSBPL10 antibody Catalog No:113429 at 1:25
dilution and Rhodamine-labeled goat anti-rabbit
IgG (red).