

NME3 antibody



Catalog Number: 113248

Product name

NME3 antibody

Specificity

Human, Mouse, Rat; other species not tested.

Antibody description

NME3 Rabbit Polyclonal antibody. Positive WB detected in mouse kidney tissue, MCF-7 cells. Positive IF detected in MCF-7 cells. Observed molecular weight by Western-blot: 18 kDa

Preparation

This antibody was obtained by immunization of NME3 recombinant protein (Accession Number: NM_002513). Purification method: Antigen affinity purified.

Formulation

PBS with 0.1% sodium azide and 50% glycerol pH 7.3.

Storage

Store at -20°C. DO NOT ALIQUOT

Clonality

Polyclonal

Ig Type

Rabbit IgG

Applications

ELISA, WB, IF

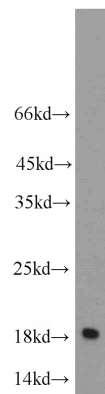
Dilutions

Recommended Dilution:

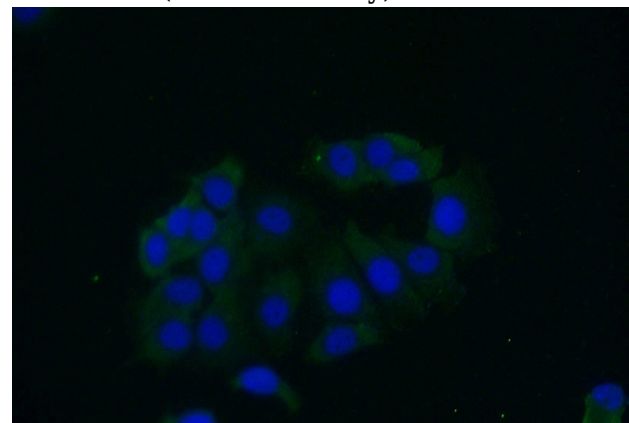
WB: 1:200-1:2000

IF: 1:20-1:200

Validations



mouse kidney tissue were subjected to SDS PAGE followed by western blot with Catalog No:113248(NME3 antibody) at dilution of 1:300



Immunofluorescent analysis of (-20°C Ethanol) fixed MCF-7 cells using Catalog No:113248(NME3 Antibody) at dilution of 1:50 and Alexa Fluor 488-conjugated AffiniPure Goat Anti-Rabbit IgG(H+L)