

NR2C1 antibody

Catalog Number: 113236

General Information

Product name:

NR2C1 antibody

Immunogen:

Applications:

ELISA, WB, IHC

Specificity:

Human, Mouse, Rat; other species not tested.

Antibody description:

NR2C1 Rabbit Polyclonal antibody. Positive WB detected in SH-SY5Y cells, PC-3 cells. Positive IHC detected in human prostate cancer tissue. Observed molecular weight by Western-blot: 52kd

Properties

Preparation:

This antibody was obtained by immunization of NR2C1 recombinant protein (Accession Number: BC040141). Purification method: Antigen affinity purified.

Formulation:

PBS with 0.02% sodium azide and 50% glycerol pH 7.3.

Storage:

Store at -20°C. DO NOT ALIQUOT

Clonality:

Polyclonal

Ig Type: Rabbit IgG

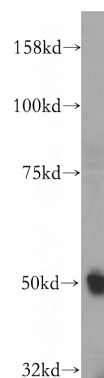
Applications

Recommended Dilution:

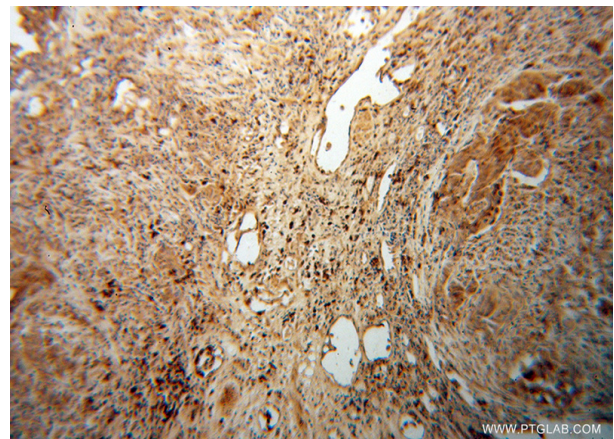
WB: 1:200-1:2000

IHC: 1:20-1:200

Validations



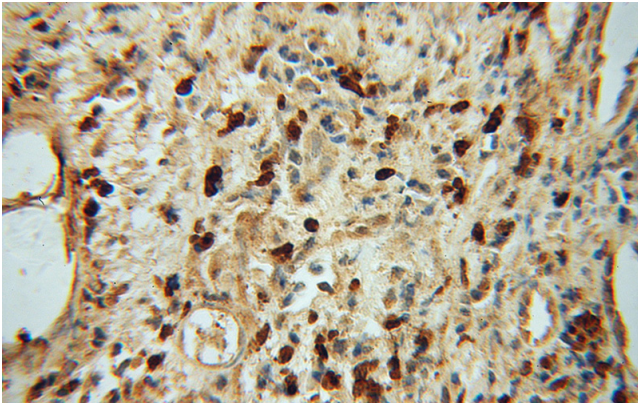
SH-SY5Y cells were subjected to SDS PAGE followed by western blot with Catalog No:113236(NR2C1 antibody) at dilution of 1:500



Immunohistochemical of paraffin-embedded human prostate cancer using Catalog No:113236(NR2C1 antibody) at dilution of 1:50 (under 10x lens). Heat mediated antigen retrieved with Citric acid buffer, pH6.0

NR2C1 antibody

Catalog Number: 113236



Immunohistochemical of paraffin-embedded human prostate cancer using Catalog No:113236(NR2C1 antibody) at dilution of 1:50 (under 40x lens). Heat mediated antigen retrieved with Citric acid buffer, pH6.0