

MTX2 antibody

Catalog Number: 112885

Product name

MTX2 antibody

WB: 1:200-1:2000

IP: 1:200-1:1000

Specificity

Human, Mouse, Rat; other species not tested.

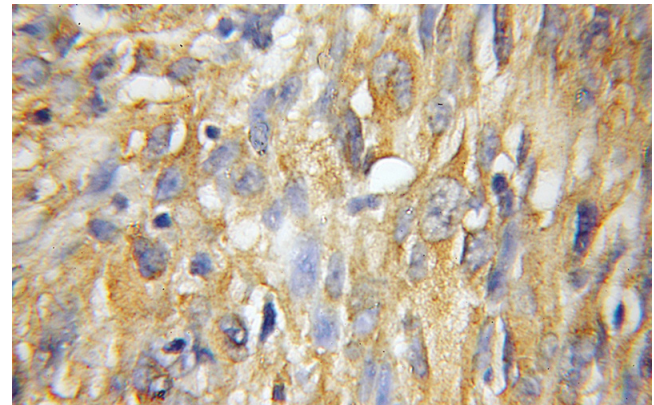
IHC: 1:20-1:200

IF: 1:10-1:100

Antibody description

MTX2 Rabbit Polyclonal antibody. Positive IF detected in HepG2 cells. Positive IHC detected in human gliomas tissue. Positive IP detected in mouse heart tissue. Positive WB detected in mouse heart tissue, mouse kidney tissue, rat heart tissue. Observed molecular weight by Western-blot: 25-29kd

Validations



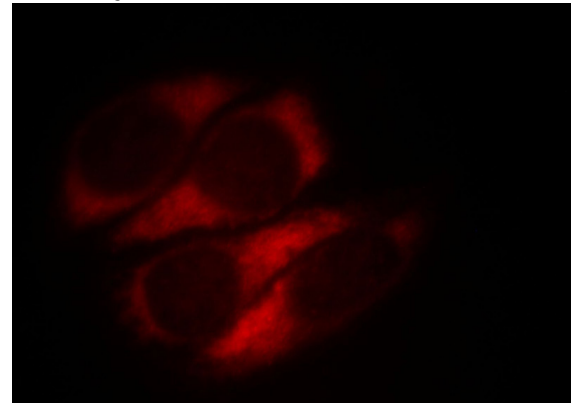
Preparation

This antibody was obtained by immunization of MTX2 recombinant protein (Accession Number: XM_047442985). Purification method: Antigen affinity purified.

Immunohistochemical of paraffin-embedded human gliomas using Catalog No:112885(MTX2 antibody) at dilution of 1:50 (under 10x lens)

Formulation

PBS with 0.1% sodium azide and 50% glycerol pH 7.3.



Storage

Store at -20°C. DO NOT ALIQUOT

Immunofluorescent analysis of HepG2 cells, using MTX2 antibody Catalog No:112885 at 1:25 dilution and Rhodamine-labeled goat anti-rabbit

Clonality

Polyclonal

Ig Type

Rabbit IgG

Applications

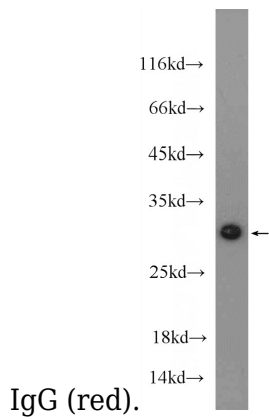
ELISA, IHC, IF, IP, WB

Dilutions

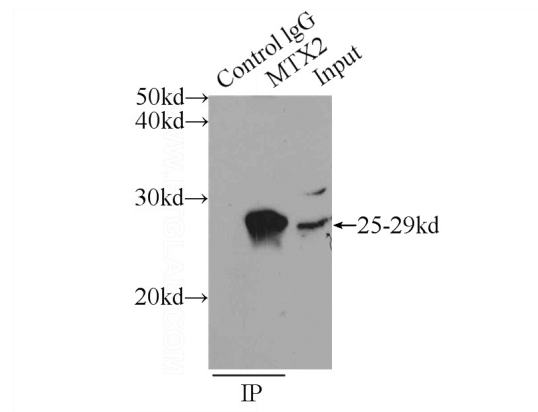
Recommended Dilution:

MTX2 antibody

Catalog Number: 112885



mouse heart tissue were subjected to SDS PAGE followed by western blot with Catalog No:112885(MTX2 Antibody) at dilution of 1:600



IP Result of anti-MTX2 (IP:Catalog No:112885, 3ug; Detection:Catalog No:112885 1:300) with mouse heart tissue lysate 4000ug.