

MECP2 antibody



Catalog Number: 112577

Product name

MECP2 antibody

Recommended Dilution:

WB: 1:200-1:2000

Specificity

Human, Mouse, Rat; other species not tested.

IP: 1:200-1:2000

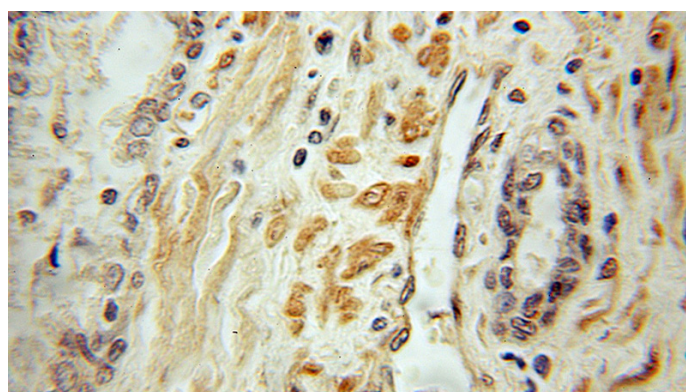
IHC: 1:20-1:200

Antibody description

MECP2 Rabbit Polyclonal antibody. Positive IP detected in MCF-7 cells. Positive WB detected in MDA-MB-453s cells, human brain tissue, mouse heart tissue, mouse lung tissue, mouse ovary tissue, SH-SY5Y cells. Positive IF detected in HepG2 cells. Positive IHC detected in human prostate cancer tissue, human brain tissue. Positive FC detected in NIH/3T3 cells. Observed molecular weight by Western-blot: 75 kDa

IF: 1:20-1:200

Validations



Immunohistochemical of paraffin-embedded human prostate cancer using Catalog No:112577(MECP2 antibody) at dilution of 1:50

Preparation

This antibody was obtained by immunization of MECP2 recombinant protein (Accession Number: NM_004992). Purification method: Antigen affinity purified.

Formulation

PBS with 0.1% sodium azide and 50% glycerol pH 7.3.

Storage

Store at -20°C. DO NOT ALIQUOT

Clonality

Polyclonal

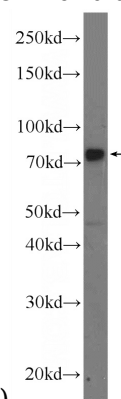
Ig Type

Rabbit IgG

Applications

ELISA, IHC, WB, IF, IP, FC

Dilutions



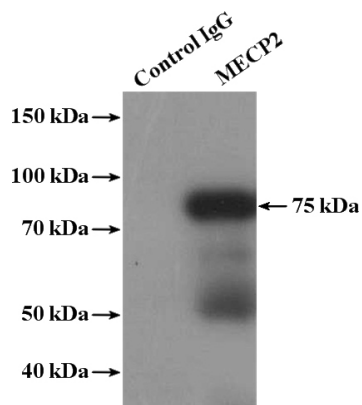
(under 10x lens)

MDA-MB-453s cells were subjected to SDS PAGE followed by western blot with Catalog No:112577(MECP2 Antibody) at dilution of 1:600

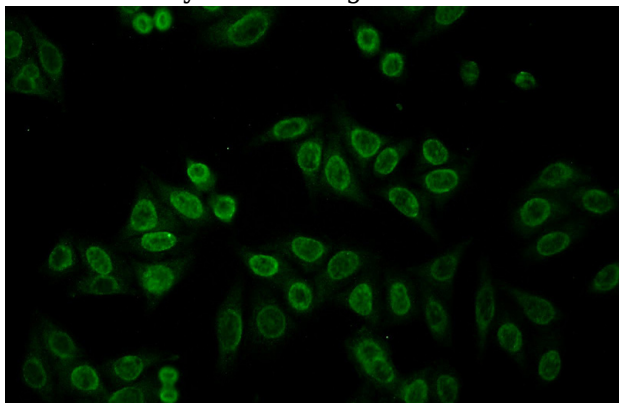
MECP2 antibody



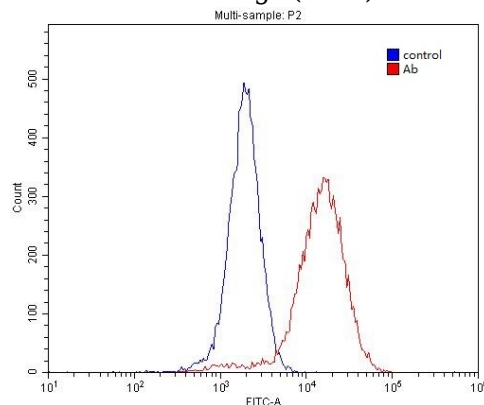
Catalog Number: 112577



IP Result of anti-MECP2 (IP:Catalog No:112577, 4ug; Detection:Catalog No:112577 1:500) with MCF-7 cells lysate 1280ug.



Immunofluorescent analysis of HepG2 cells using Catalog No:112577(MECP2 Antibody) at dilution of 1:50 and Alexa Fluor 488-conjugated AffiniPure Goat Anti-Rabbit IgG(H+L)



1X10⁶ NIH/3T3 cells were stained with 0.2ug MECP2 antibody (Catalog No:112577, red) and control antibody (blue). Fixed with 4% PFA blocked with 3% BSA (30 min). Alexa Fluor 488-conjugated AffiniPure Goat Anti-Rabbit IgG(H+L) with dilution 1:1500.