

MDH1 antibody



Catalog Number: 112568

Product name

MDH1 antibody

Immunogen

[Human MDH1 Recombinant protein \(GST tag\)](#)

Specificity

Human, Mouse, Rat; other species not tested.

Antibody description

MDH1 Rabbit Polyclonal antibody. Positive IP detected in mouse liver tissue. Positive WB detected in HL-60 cells, HepG2 cells, human kidney tissue, human spleen tissue, mouse liver tissue. Positive FC detected in HepG2 cells. Positive IF detected in HepG2 cells. Positive IHC detected in human renal cell carcinoma tissue, human liver cancer tissue. Observed molecular weight by Western-blot: 36 kDa

Preparation

This antibody was obtained by immunization of MDH1 recombinant protein (Accession Number: NM_005917). Purification method: Antigen affinity purified.

Formulation

PBS with 0.02% sodium azide and 50% glycerol pH 7.3.

Storage

Store at -20°C. DO NOT ALIQUOT

Clonality

Polyclonal

Ig Type

Rabbit IgG

Applications

ELISA, WB, IF, FC, IP, IHC

Dilutions

Recommended Dilution:

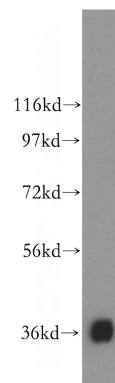
WB: 1:500-1:5000

IP: 1:500-1:5000

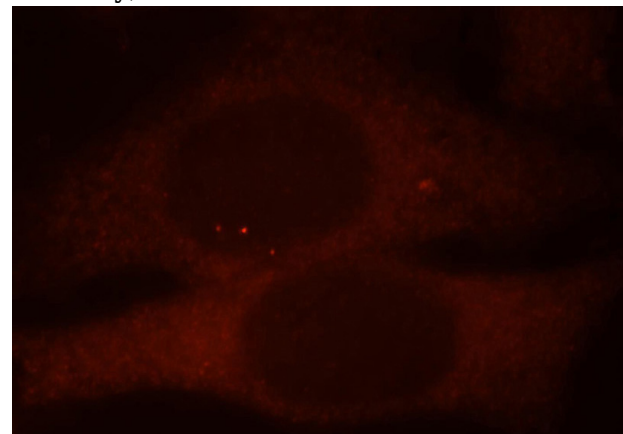
IHC: 1:50-1:500

IF: 1:10-1:100

Validations



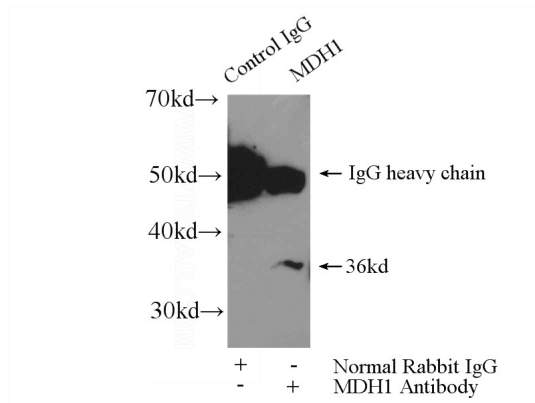
HL-60 cells were subjected to SDS PAGE followed by western blot with Catalog No:112568(MDH1 antibody) at dilution of 1:500



Immunofluorescent analysis of HepG2 cells, using MDH1 antibody Catalog No:112568 at 1:25 dilution and Rhodamine-labeled goat anti-rabbit

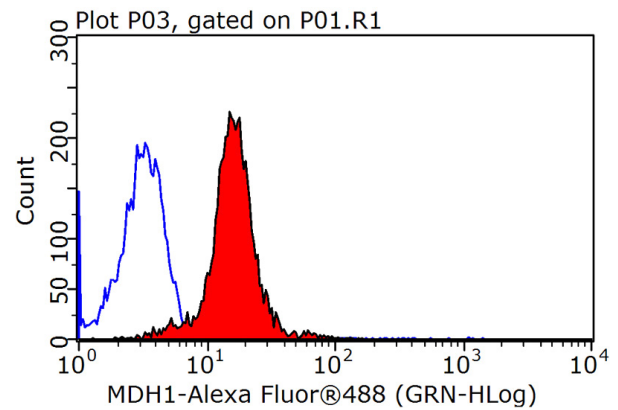
MDH1 antibody

Catalog Number: 112568



IgG (red).

IP Result of anti-MDH1 (IP:Catalog No:112568, 4ug; Detection:Catalog No:112568 1:1000) with mouse liver tissue lysate 6400ug.



1X10⁶ HepG2 cells were stained with 0.2ug MDH1 antibody (Catalog No:112568, red) and control antibody (blue). Fixed with 90% MeOH blocked with 3% BSA (30 min). Alexa Fluor 488-conjugated AffiniPure Goat Anti-Rabbit IgG(H+L) with dilution 1:1500.