

MFF antibody



Catalog Number: 112527

Product name

MFF antibody

Recommended Dilution:

WB: 1:500-1:5000

Specificity

Human, Mouse, Rat; other species not tested.

IP: 1:500-1:5000

IHC: 1:20-1:200

Antibody description

MFF Rabbit Polyclonal antibody. Positive IF detected in HepG2 cells, Hela cells. Positive IHC detected in human brain tissue, human heart tissue, human stomach tissue. Positive WB detected in human brain tissue, HeLa cells, mouse brain tissue, rat brain tissue. Positive IP detected in mouse brain tissue. Observed molecular weight by Western-blot: 26-29, 35-38 kDa

IF: 1:20-1:200

Validations

Preparation

This antibody was obtained by immunization of MFF recombinant protein (Accession Number: XM_006712639). Purification method: Antigen affinity purified.

Formulation

PBS with 0.02% sodium azide and 50% glycerol pH 7.3.

Storage

Store at -20°C. DO NOT ALIQUOT

Clonality

Polyclonal

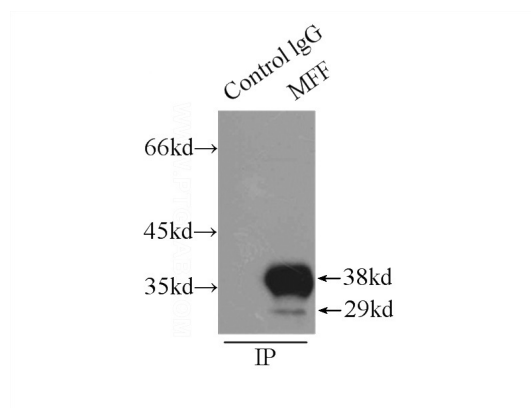
Ig Type

Rabbit IgG

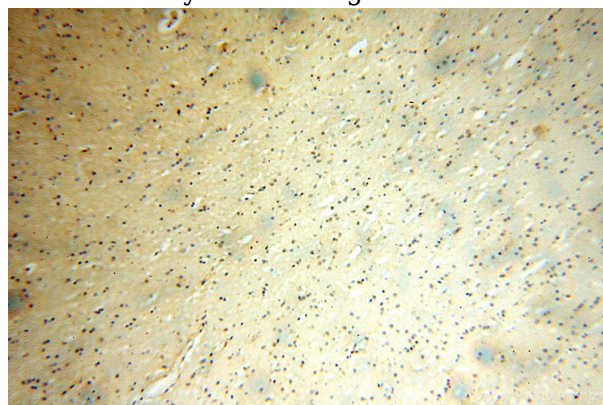
Applications

ELISA, WB, IHC, IP, IF

Dilutions



IP Result of anti-MFF (IP:Catalog No:112527, 3ug; Detection:Catalog No:112527 1:1000) with mouse brain tissue lysate 8000ug.

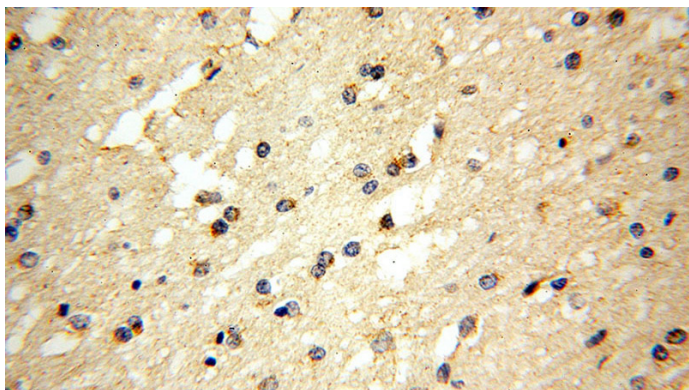


Immunohistochemical of paraffin-embedded human brain using Catalog No:112527(MFF antibody) at dilution of 1:100 (under 10x lens)

MFF antibody

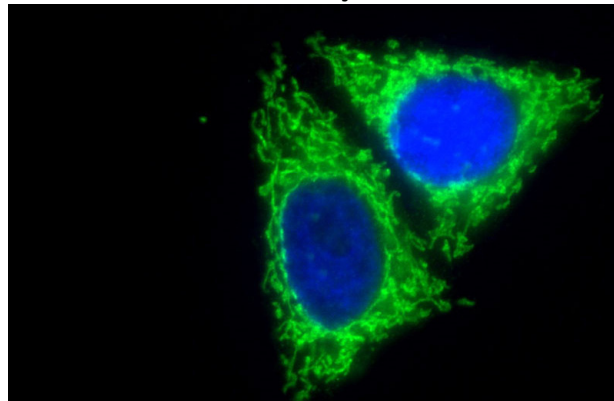


Catalog Number: 112527



Immunohistochemical of paraffin-embedded human brain using Catalog No:112527(MFF antibody) at dilution of 1:100 (under 40x lens)

human brain tissue were subjected to SDS PAGE followed by western blot with Catalog No:112527(MFF antibody) at dilution of 1:1000



Immunofluorescent analysis of (10% Formaldehyde) fixed HepG2 cells using Catalog No:112527(MFF Antibody) at dilution of 1:100 and Alexa Fluor 488-conjugated AffiniPure Goat Anti-Rabbit IgG(H+L)

