

# MAGOH antibody

Catalog Number: 112455

## Product name

MAGOH antibody

IP: 1:200-1:2000

IHC: 1:20-1:200

## Specificity

Human; other species not tested.

## Antibody description

MAGOH Rabbit Polyclonal antibody. Positive IHC detected in human ovary tumor tissue. Positive WB detected in K-562 cells, HeLa cells, HL-60 cells, human brain tissue, Raji cells. Positive IP detected in K-562 cells. Observed molecular weight by Western-blot: 17 kDa

## Preparation

This antibody was obtained by immunization of MAGOH recombinant protein (Accession Number: NM\_002370). Purification method: Antigen affinity purified.

## Formulation

PBS with 0.1% sodium azide and 50% glycerol pH 7.3.

## Storage

Store at -20°C. DO NOT ALIQUOT

## Clonality

Polyclonal

## Ig Type

Rabbit IgG

## Applications

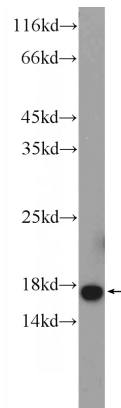
ELISA, IHC, IP, WB

## Dilutions

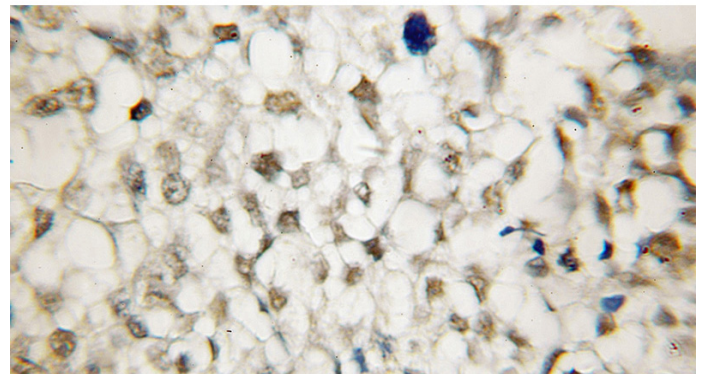
Recommended Dilution:

WB: 1:500-1:5000

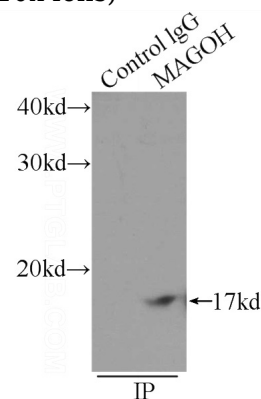
## Validations



K-562 cells were subjected to SDS PAGE followed by western blot with Catalog No:112455(MAGOH Antibody) at dilution of 1:1000



Immunohistochemical of paraffin-embedded human ovary tumor using Catalog No:112455(MAGOH antibody) at dilution of 1:50 (under 10x lens)



IP Result of anti-MAGOH (IP:Catalog No:112455,

# MAGOH antibody



Catalog Number: 112455

---

3ug; Detection:Catalog No:112455 1:500) with K-562 cells lysate 2400ug.