

# LY6D antibody



Catalog Number: 112398

## Product name

LY6D antibody

## Specificity

Human, Mouse; other species not tested.

## Antibody description

LY6D Rabbit Polyclonal antibody. Positive WB detected in mouse spleen tissue. Positive IHC detected in human tonsillitis tissue. Observed molecular weight by Western-blot: 13-14 kDa

## Preparation

This antibody was obtained by immunization of LY6D recombinant protein (Accession Number: NM\_003695). Purification method: Antigen affinity purified.

## Formulation

PBS with 0.1% sodium azide and 50% glycerol pH 7.3.

## Storage

Store at -20°C. DO NOT ALIQUOT

## Clonality

Polyclonal

## Ig Type

Rabbit IgG

## Applications

ELISA, WB, IHC

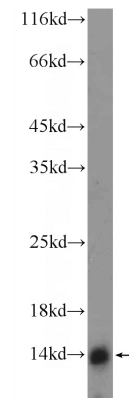
## Dilutions

Recommended Dilution:

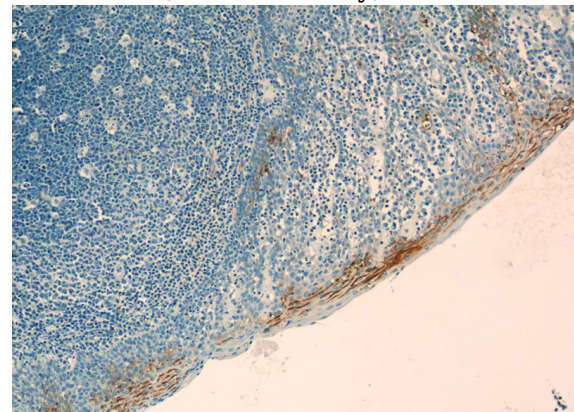
WB: 1:200-1:1000

IHC: 1:20-1:200

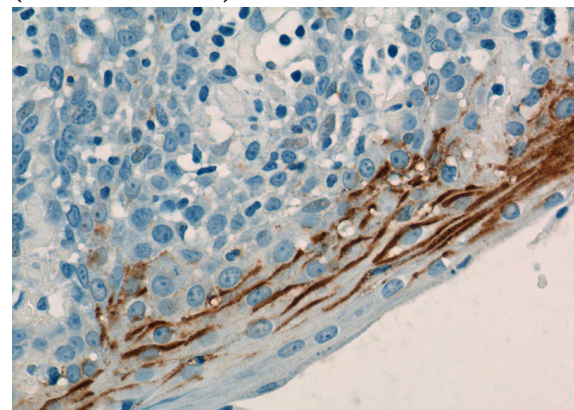
## Validations



mouse spleen tissue were subjected to SDS PAGE followed by western blot with Catalog No:112398(LY6D Antibody) at dilution of 1:300



Immunohistochemistry of paraffin-embedded human tonsillitis tissue slide using Catalog No:112398(LY6D Antibody) at dilution of 1:50 (under 10x lens)



Immunohistochemistry of paraffin-embedded human tonsillitis tissue slide using Catalog No:112398(LY6D Antibody) at dilution of 1:50 (under 40x lens)