

LRPAP1 antibody

Catalog Number: 112324

Product name

LRPAP1 antibody

Specificity

Human; other species not tested.

Antibody description

LRPAP1 Rabbit Polyclonal antibody. Positive FC detected in HeLa cells. Positive IHC detected in human testis tissue, human kidney tissue. Positive WB detected in MDA-MB-453s cells, HeLa cells. Observed molecular weight by Western-blot: 39-40 kDa

Preparation

This antibody was obtained by immunization of LRPAP1 recombinant protein (Accession Number: NM_002337). Purification method: Antigen affinity purified.

Formulation

PBS with 0.1% sodium azide and 50% glycerol pH 7.3.

Storage

Store at -20°C. DO NOT ALIQUOT

Clonality

Polyclonal

Ig Type

Rabbit IgG

Applications

ELISA, WB, IHC, FC

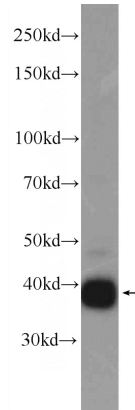
Dilutions

Recommended Dilution:

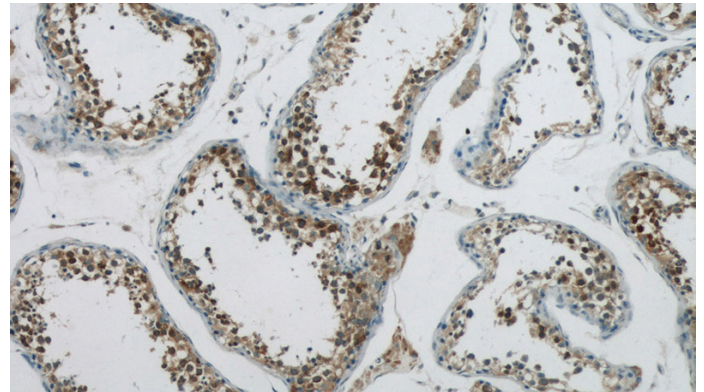
WB: 1:500-1:5000

IHC: 1:20-1:200

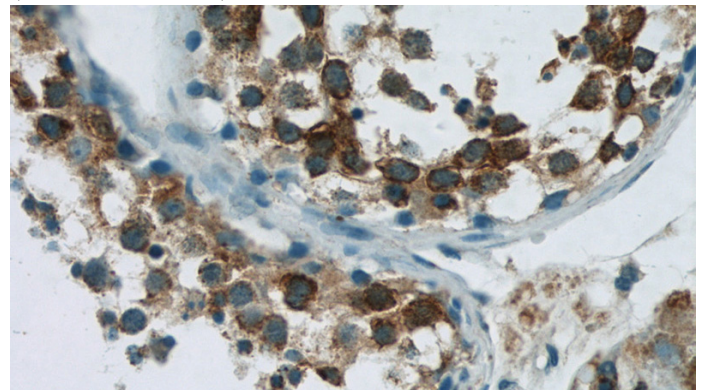
Validations



MDA-MB-453s cells were subjected to SDS PAGE followed by western blot with Catalog No:112324(LRPAP1 Antibody) at dilution of 1:1000



Immunohistochemistry of paraffin-embedded human testis tissue slide using Catalog No:112324(LRPAP1 Antibody) at dilution of 1:50 (under 10x lens)



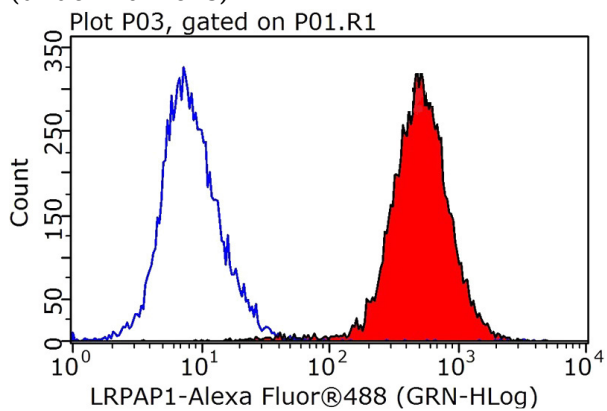
Immunohistochemistry of paraffin-embedded human testis tissue slide using Catalog

LRPAP1 antibody



Catalog Number: 112324

No:112324(LRPAP1 Antibody) at dilution of 1:50
(under 40x lens)



1X10⁶ HeLa cells were stained with 0.2ug LRPAP1 antibody (Catalog No:112324, red) and control antibody (blue). Fixed with 90% MeOH blocked with 3% BSA (30 min). Alexa Fluor 488-conjugated AffiniPure Goat Anti-Rabbit IgG(H+L) with dilution 1:1000.