

LRP2-Specific antibody



Catalog Number: 112322

Product name

LRP2-Specific antibody

Specificity

Human; other species not tested.

Antibody description

LRP2-Specific Rabbit Polyclonal antibody. Positive IHC detected in human kidney tissue. Positive FC detected in HEK-293 cells. Positive WB detected in HEK-293 cells, human brain tissue, human placenta tissue. Observed molecular weight by Western-blot: 280 kDa

Preparation

This antibody was obtained by immunization of Peptide (Accession Number: NM_004525).
Purification method: Antigen affinity purified.

Formulation

PBS with 0.02% sodium azide and 50% glycerol
pH 7.3.

Storage

Store at -20°C. DO NOT ALIQUOT

Clonality

Polyclonal

Ig Type

Rabbit IgG

Applications

ELISA, WB, IHC, FC

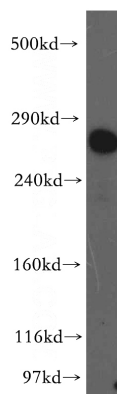
Dilutions

Recommended Dilution:

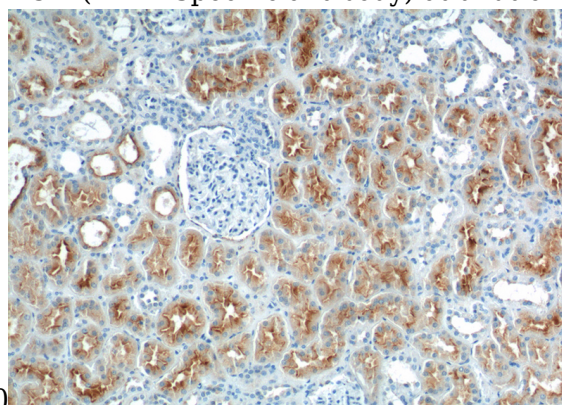
WB: 1:200-1:1000

IHC: 1:20-1:200

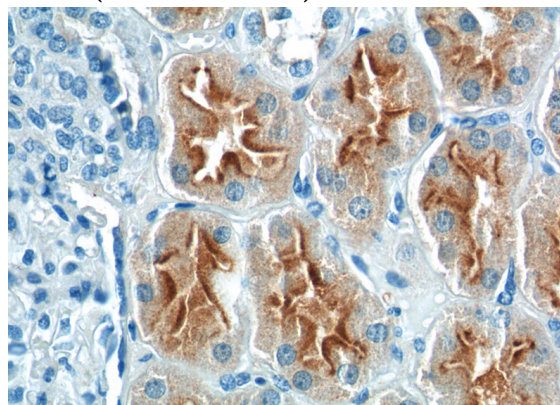
Validations



HEK-293 cells were subjected to SDS PAGE followed by western blot with Catalog No:112322(LRP2-Specific antibody) at dilution of



Immunohistochemistry of paraffin-embedded human kidney tissue slide using Catalog No:112322(LRP2-Specific Antibody) at dilution of 1:200 (under 10x lens).



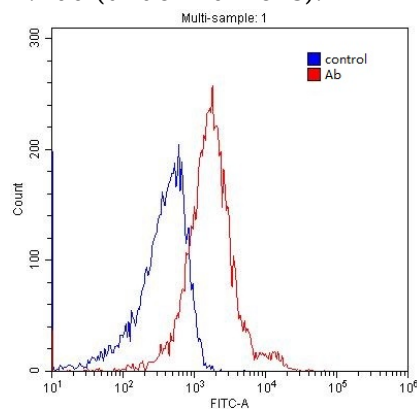
Immunohistochemistry of paraffin-embedded human kidney tissue slide using Catalog

LRP2-Specific antibody



Catalog Number: 112322

No:112322(LRP2-Specific Antibody) at dilution of 1:200 (under 40x lens).



1×10^6 HEK-293 cells were stained with 0.2ug LRP2-Specific antibody (Catalog No:112322, red) and control antibody (blue). Fixed with 4% PFA blocked with 3% BSA (30 min). Alexa Fluor 488-conjugated AffiniPure Goat Anti-Rabbit IgG(H+L) with dilution 1:1500.