

# LONP1 antibody



Catalog Number: 112295

## Product name

LONP1 antibody

## Immunogen

[Human LONP1 Recombinant protein \(GST tag\)](#)

## Specificity

Human, Mouse, Rat; other species not tested.

## Antibody description

LONP1 Rabbit Polyclonal antibody. Positive IP detected in mouse heart tissue. Positive WB detected in HeLa cells, HepG2 cells, human heart tissue, mouse heart tissue, rat heart tissue, rat lung tissue. Positive IF detected in HepG2 cells. Positive IHC detected in human lung cancer tissue. Observed molecular weight by Western-blot: 100 kDa

## Preparation

This antibody was obtained by immunization of LONP1 recombinant protein (Accession Number: NM\_004793). Purification method: Antigen affinity purified.

## Formulation

PBS with 0.02% sodium azide and 50% glycerol pH 7.3.

## Storage

Store at -20°C. DO NOT ALIQUOT

## Clonality

Polyclonal

## Ig Type

Rabbit IgG

## Applications

ELISA, WB, IHC, IP, IF

## Dilutions

Recommended Dilution:

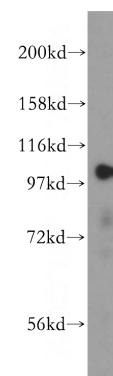
WB: 1:200-1:2000

IP: 1:500-1:5000

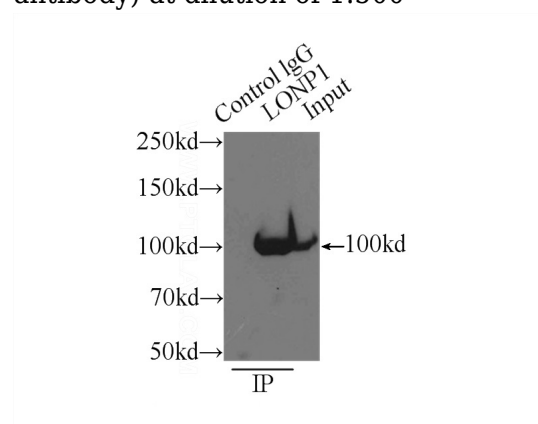
IHC: 1:20-1:200

IF: 1:10-1:100

## Validations



HeLa cells were subjected to SDS PAGE followed by western blot with Catalog No:112295(LONP1 antibody) at dilution of 1:500

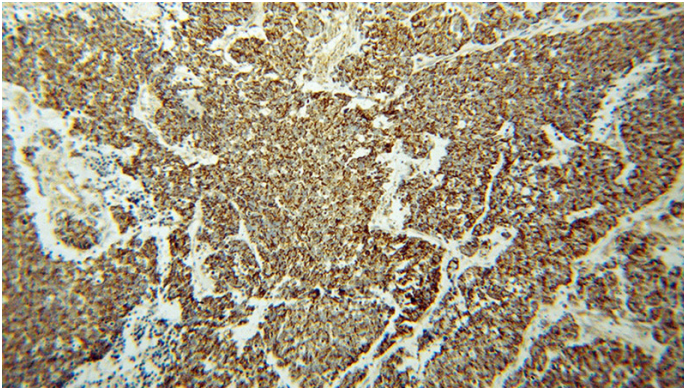


IP Result of anti-LONP1 (IP:Catalog No:112295, 3ug; Detection:Catalog No:112295 1:1000) with mouse heart tissue lysate 9500ug.

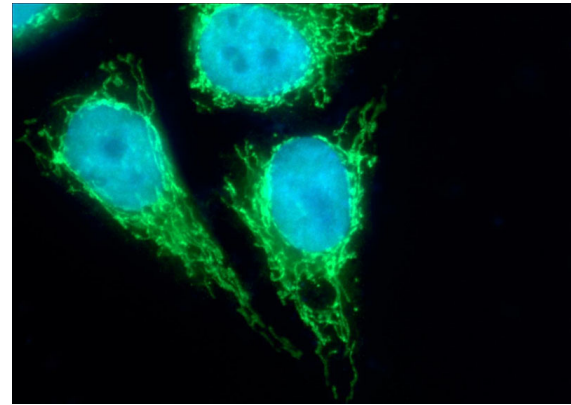
# LONP1 antibody

Catalog Number: 112295

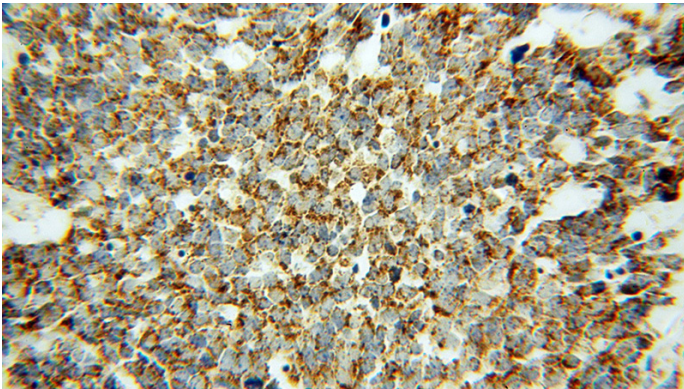
---



Immunohistochemical of paraffin-embedded human lung cancer using Catalog No:112295(LONP1 antibody) at dilution of 1:50 (under 40x lens)



Immunohistochemical of paraffin-embedded human lung cancer using Catalog No:112295(LONP1 antibody) at dilution of 1:50 (under 10x lens)



Immunofluorescent analysis of HepG2 cells using Catalog No:112295(LONP1 Antibody) at dilution of 1:25 and Alexa Fluor 488-conjugated AffiniPure Goat Anti-Rabbit IgG(H+L)