

# LAD1 antibody



Catalog Number: 112267

## General Information

### Product name:

LAD1 antibody

### Immunogen:

### Applications:

ELISA, WB, IHC

### Specificity:

Human, Mouse; other species not tested.

### Antibody description:

LAD1 Rabbit Polyclonal antibody. Positive WB detected in HepG2 cells, HeLa cells, mouse skin tissue. Positive IHC detected in human kidney tissue, human brain tissue, human testis tissue. Observed molecular weight by Western-blot: 48kd

## Properties

### Preparation:

This antibody was obtained by immunization of LAD1 recombinant protein (Accession Number: BC009742). Purification method: Antigen affinity purified.

### Formulation:

PBS with 0.02% sodium azide and 50% glycerol pH 7.3.

### Storage:

Store at -20°C. DO NOT ALIQUOT

### Clonality:

Polyclonal

**Ig Type:**Rabbit IgG

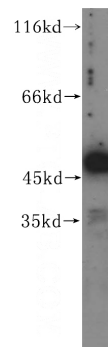
## Applications

Recommended Dilution:

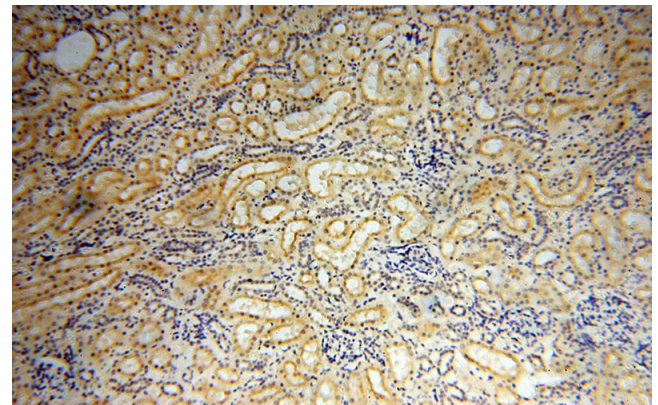
WB: 1:500-1:5000

IHC: 1:20-1:200

## Validations



HepG2 cells were subjected to SDS PAGE followed by western blot with Catalog No:112267(LAD1 antibody) at dilution of 1:400

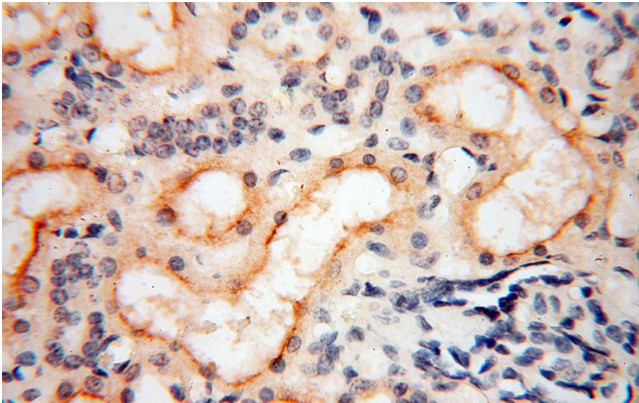


Immunohistochemical of paraffin-embedded human kidney using Catalog No:112267(LAD1 antibody) at dilution of 1:100 (under 10x lens)

# LAD1 antibody

Catalog Number: 112267

---



Immunohistochemical of paraffin-embedded human kidney using Catalog No:112267(LAD1 antibody) at dilution of 1:100 (under 40x lens)