

Lactoferrin antibody



Catalog Number: 112266

Product name

Lactoferrin antibody

IP: 1:200-1:2000

IHC: 1:20-1:200

Specificity

Human; other species not tested.

Antibody description

Lactoferrin Rabbit Polyclonal antibody. Positive WB detected in HEK-293 cells, human pancreas tissue. Positive IP detected in HeLa cells. Positive IHC detected in human liver tissue, human prostate hyperplasia tissue. Observed molecular weight by Western-blot: 51 kDa

Preparation

This antibody was obtained by immunization of Lactoferrin recombinant protein (Accession Number: NM_002343). Purification method: Antigen affinity purified.

Formulation

PBS with 0.1% sodium azide and 50% glycerol pH 7.3.

Storage

Store at -20°C. DO NOT ALIQUOT

Clonality

Polyclonal

Ig Type

Rabbit IgG

Applications

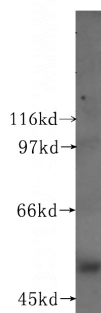
ELISA, IHC, WB, IP

Dilutions

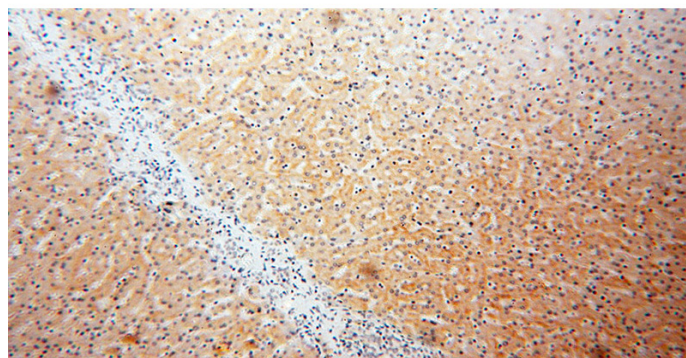
Recommended Dilution:

WB: 1:200-1:2000

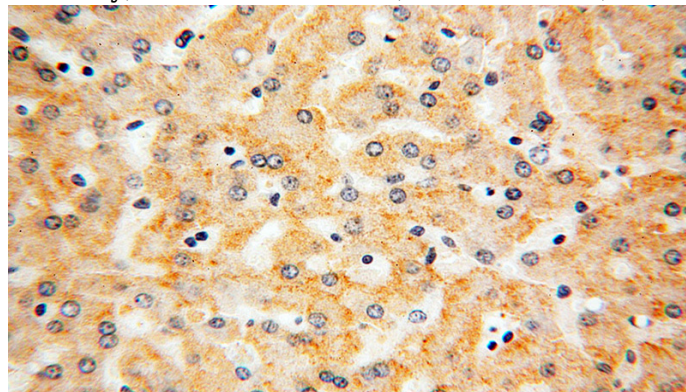
Validations



HEK-293 cells were subjected to SDS PAGE followed by western blot with Catalog No:112266(LTF antibody) at dilution of 1:500



Immunohistochemical of paraffin-embedded human liver using Catalog No:112266(LTF antibody) at dilution of 1:50 (under 10x lens)



Immunohistochemical of paraffin-embedded human liver using Catalog No:112266(LTF

Lactoferrin antibody



Catalog Number: 112266

antibody) at dilution of 1:50 (under 40x lens)

IP Result of anti-LTF (IP:Catalog No:112266, 4ug;
Detection:Catalog No:112266 1:600) with HeLa
cells lysate 4000ug.

