

LACTB antibody



Catalog Number: 112264

Product name

LACTB antibody

WB: 1:1000-1:10000

IHC: 1:20-1:200

Immunogen

[Human LACTB Recombinant protein \(His tag\)](#)

Specificity

human, mouse, rat; other species not tested.

Antibody description

LACTB Rabbit Polyclonal antibody. Positive IHC detected in human liver. Positive WB detected in human heart tissue, HeLa cells. Observed molecular weight by Western-blot: 55kd

Preparation

This antibody was obtained by immunization of LACTB recombinant protein (Accession Number: NM_032857). Purification method: Antigen affinity purified.

Formulation

PBS with 0.02% sodium azide and 50% glycerol pH 7.3.

Storage

Store at -20°C. DO NOT ALIQUOT

Clonality

Polyclonal

Ig Type

Rabbit IgG

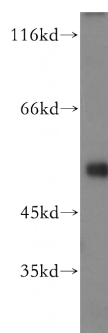
Applications

ELISA, WB, IHC

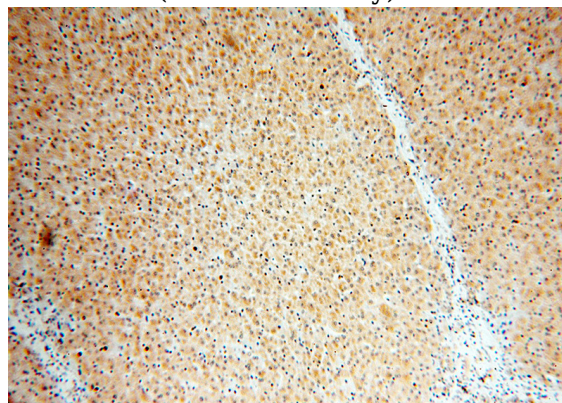
Dilutions

Recommended Dilution:

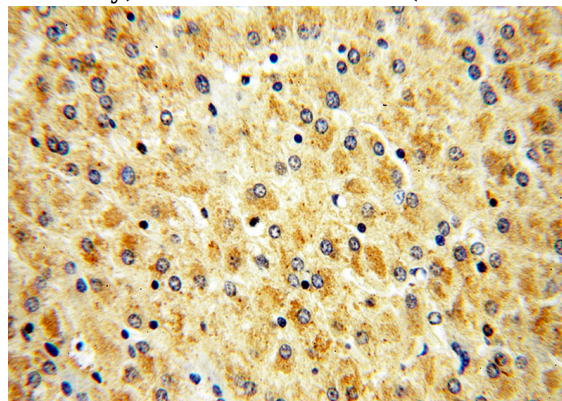
Validations



human heart tissue were subjected to SDS PAGE followed by western blot with Catalog No:112264(LACTB antibody) at dilution of 1:800



Immunohistochemical of paraffin-embedded human liver using Catalog No:112264(LACTB antibody) at dilution of 1:100 (under 10x lens)



Immunohistochemical of paraffin-embedded human liver using Catalog No:112264(LACTB

LACTB antibody



Catalog Number: 112264

antibody) at dilution of 1:100 (under 40x lens)