

# liver Arginase antibody



Catalog Number: 112248

## Product name

liver Arginase antibody

## Specificity

Human, Mouse, Rat; other species not tested.

## Antibody description

liver Arginase Rabbit Polyclonal antibody. Positive WB detected in mouse liver tissue, human colon tissue, human heart tissue, human liver tissue, mouse heart tissue. Positive IP detected in mouse liver tissue. Positive IF detected in HepG2 cells. Positive IHC detected in human liver tissue, human heart tissue, human kidney tissue, human liver cancer tissue, human lung tissue, human placenta tissue, human spleen tissue, human testis tissue, mouse kidney tissue, mouse liver tissue. Positive FC detected in HepG2 cells. Observed molecular weight by Western-blot: 35-36 kDa

## Preparation

This antibody was obtained by immunization of liver Arginase recombinant protein (Accession Number: BC005321). Purification method: Antigen affinity purified.

## Formulation

PBS with 0.02% sodium azide and 50% glycerol pH 7.3.

## Storage

Store at -20°C. DO NOT ALIQUOT

## Clonality

Polyclonal

## Ig Type

Rabbit IgG

## Applications

ELISA, IHC, IP, IF, FC, WB

## Dilutions

Recommended Dilution:

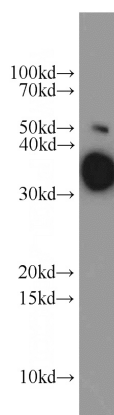
WB: 1:500-1:5000

IP: 1:500-1:5000

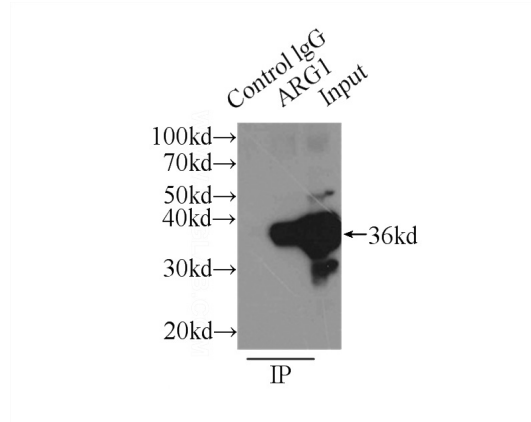
IHC: 1:20-1:200

IF: 1:20-1:200

## Validations



mouse liver tissue were subjected to SDS PAGE followed by western blot with Catalog No:112248(ARG1 antibody) at dilution of 1:1000

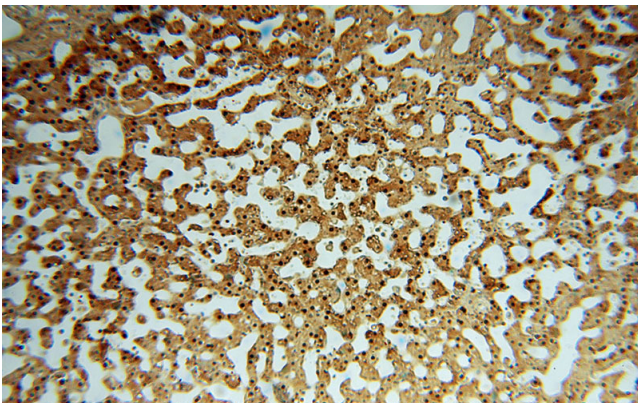


IP Result of anti-ARG1 (IP:Catalog No:112248, 3ug; Detection:Catalog No:112248 1:1000) with mouse liver tissue lysate 12500ug.

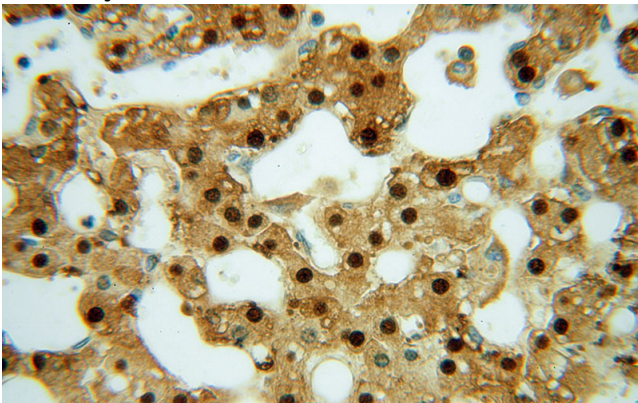
# liver Arginase antibody



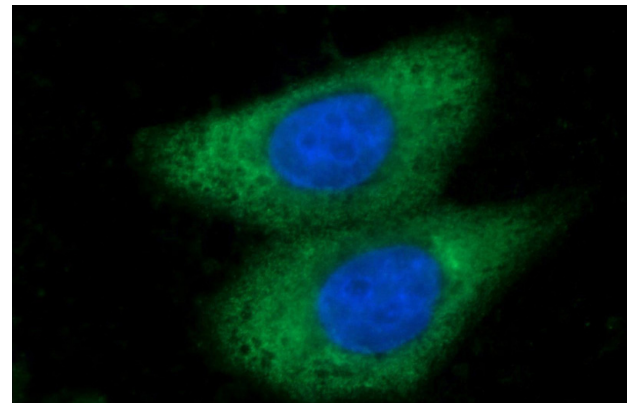
Catalog Number: 112248



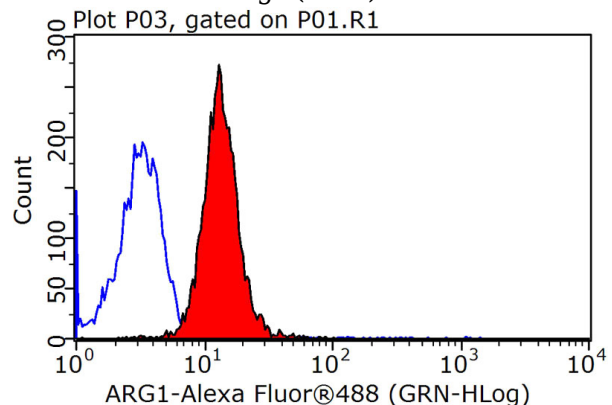
Immunohistochemical of paraffin-embedded human liver using Catalog No:112248(ARG1 antibody) at dilution of 1:50 (under 10x lens)



Immunohistochemical of paraffin-embedded human liver using Catalog No:112248(ARG1 antibody) at dilution of 1:50 (under 40x lens)



Immunofluorescent analysis of HepG2 cells using Catalog No:112248(ARG1 Antibody) at dilution of 1:50 and Alexa Fluor 488-conjugated AffiniPure Goat Anti-Rabbit IgG(H+L)



1X10<sup>6</sup> HepG2 cells were stained with 0.2ug ARG1 antibody (Catalog No:112248, red) and control antibody (blue). Fixed with 90% MeOH blocked with 3% BSA (30 min). Alexa Fluor 488-conjugated AffiniPure Goat Anti-Rabbit IgG(H+L) with dilution 1:1500.