

# LIN28 antibody



Catalog Number: 112231

## Product name

LIN28 antibody

## Immunogen

## Specificity

Human, Mouse, Rat; other species not tested.

## Antibody description

LIN28 Rabbit Polyclonal antibody. Positive IHC detected in human prostate cancer tissue. Positive IF detected in human embryonic stem cells. Positive WB detected in K-562 cells, NCCIT cell. Positive IP detected in K-562 cells. Observed molecular weight by Western-blot: 28 kDa

## Preparation

This antibody was obtained by immunization of LIN28 recombinant protein (Accession Number: NM\_024674). Purification method: Antigen affinity purified.

## Formulation

PBS with 0.1% sodium azide and 50% glycerol pH 7.3.

## Storage

Store at -20°C. DO NOT ALIQUOT

## Clonality

Polyclonal

## Ig Type

Rabbit IgG

## Applications

ELISA, WB, IHC, IP, IF

## Dilutions

Recommended Dilution:

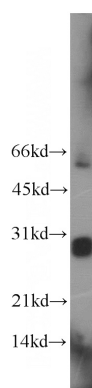
WB: 1:200-1:2000

IP: 1:200-1:2000

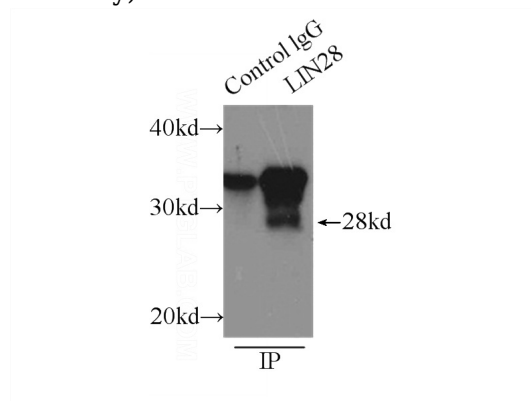
IHC: 1:20-1:200

IF: 1:20-1:200

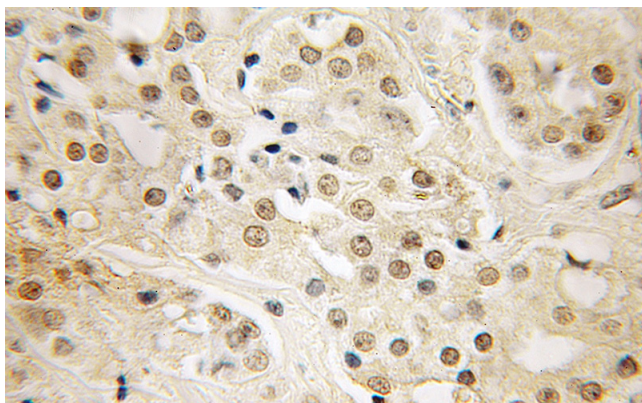
## Validations



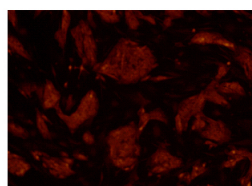
K-562 cells were subjected to SDS PAGE followed by western blot with Catalog No:112231(LIN28 antibody) at dilution of 1:300



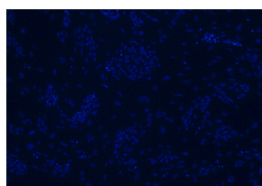
IP Result of anti-LIN28 (IP:Catalog No:112231, 3ug; Detection:Catalog No:112231 1:500) with K-562 cells lysate 1000ug.



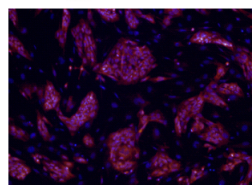
Immunohistochemical of paraffin-embedded human prostate cancer using Catalog No:112231(LIN28 antibody) at dilution of 1:50 (under 40x lens)



PE

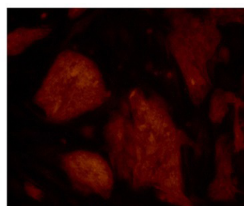


DAPI

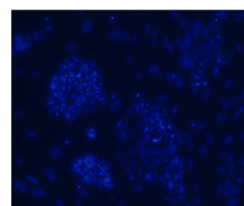


Confocal immunofluorescent analysis of human embryonic stem cells with 11724-1-AP at dilution of 1:200. The PE shows staining with 11724-1-AP/PE. The DAPI shows nuclear staining by DAPI. The MERGE is the merge of PE and DAPI. (10X)

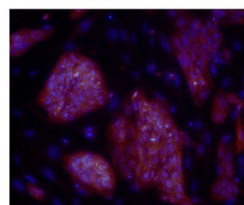
Confocal immunofluorescent analysis of human embryonic stem cells with Catalog No:112231 at dilution of 1:200. The PE shows staining with Catalog No:112231/PE. The DAPI shows nuclear staining by DAPI. The MERGE is the merge of PE and DAPI.(10X)



PE



DAPI



MERGE

Confocal immunofluorescent analysis of human embryonic stem cells at dilution of 1:400. The PE shows staining

The DAPI shows nuclear staining by DAPI. The MERGE is the merge of PE and DAPI. (20X)

Confocal immunofluorescent analysis of human embryonic stem cells with Catalog No:112231 at dilution of 1:400. The PE shows staining with Catalog No:112231/PE. The DAPI shows nuclear staining by DAPI. The MERGE is the merge of PE and DAPI. (20X)