

LEFTY2 antibody



Catalog Number: 112192

Product name

LEFTY2 antibody

IHC: 1:20-1:200

IF: 1:20-1:200

Specificity

Human, Mouse, Rat; other species not tested.

Antibody description

LEFTY2 Rabbit Polyclonal antibody. Positive IHC detected in human endometrial cancer tissue. Positive IF detected in HeLa cells. Positive WB detected in HeLa cells, mouse uterus tissue. Observed molecular weight by Western-blot: 34 kDa

Preparation

This antibody was obtained by immunization of LEFTY2 recombinant protein (Accession Number: NM_003240). Purification method: Antigen affinity purified.

Formulation

PBS with 0.02% sodium azide and 50% glycerol pH 7.3.

Storage

Store at -20°C. DO NOT ALIQUOT

Clonality

Polyclonal

Ig Type

Rabbit IgG

Applications

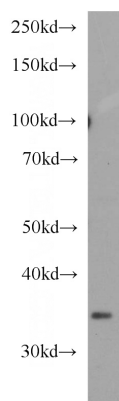
ELISA, WB, IHC, IF

Dilutions

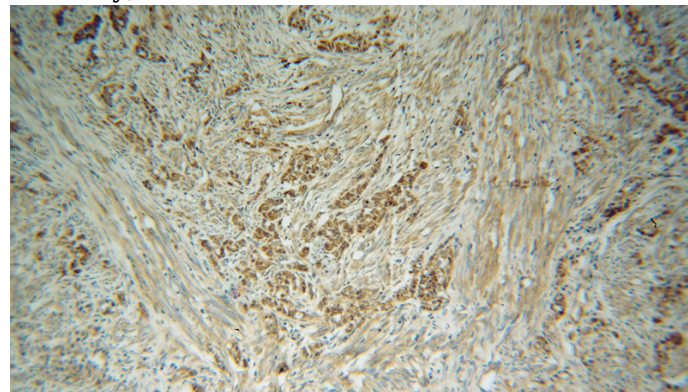
Recommended Dilution:

WB: 1:200-1:2000

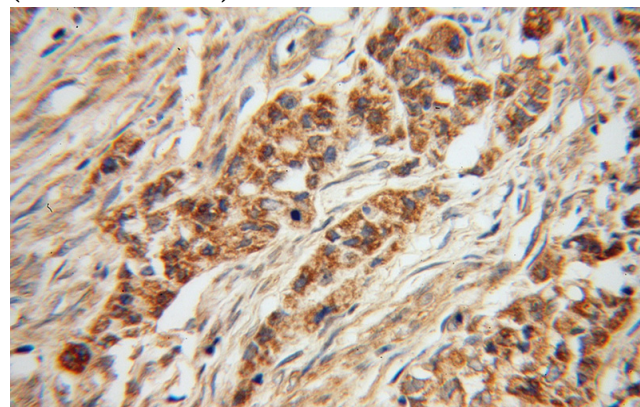
Validations



HeLa cells were subjected to SDS PAGE followed by western blot with Catalog No:112192(LEFTY2 antibody) at dilution of 1:500



Immunohistochemical of paraffin-embedded human endometrial cancer using Catalog No:112192(LEFTY2 antibody) at dilution of 1:50 (under 10x lens)



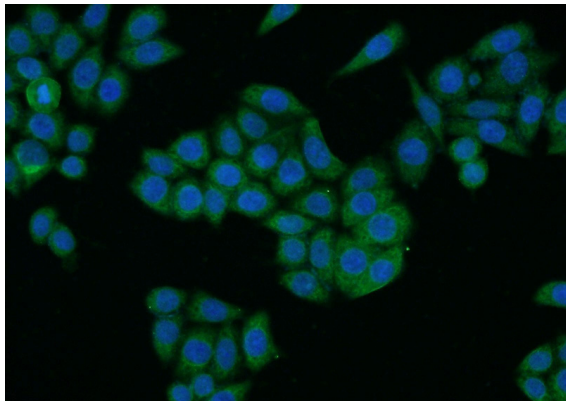
Immunohistochemical of paraffin-embedded

LEFTY2 antibody



Catalog Number: 112192

human endometrial cancer using Catalog No:112192(LEFTY2 antibody) at dilution of 1:50 (under 40x lens)



Immunofluorescent analysis of HeLa cells using Catalog No:112192(LEFTY2 Antibody) at dilution of 1:50 and Alexa Fluor 488-conjugated AffiniPure Goat Anti-Rabbit IgG(H+L)