

# LDLR antibody



Catalog Number: 112188

## Product name

LDLR antibody

Recommended Dilution:

WB: 1:200-1:2000

## Specificity

Human, Mouse; other species not tested.

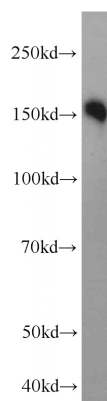
IP: 1:200-1:2000

IHC: 1:20-1:200

## Antibody description

LDLR Rabbit Polyclonal antibody. Positive WB detected in mouse brain tissue, HeLa cells, HL-60 cells, human brain tissue, Jurkat cells, NIH/3T3 cells, Raji cells. Positive IP detected in HeLa cells. Positive FC detected in HeLa cells. Positive IHC detected in human colon cancer tissue, human brain tissue, human pancreas tissue. Observed molecular weight by Western-blot: 150-160 kDa

## Validations



## Preparation

This antibody was obtained by immunization of LDLR recombinant protein (Accession Number: NM\_000527). Purification method: Antigen affinity purified.

mouse brain tissue were subjected to SDS PAGE followed by western blot with Catalog No:112188(LDLR antibody) at dilution of 1:300

## Formulation

PBS with 0.1% sodium azide and 50% glycerol pH 7.3.

## Storage

Store at -20°C. DO NOT ALIQUOT

## Clonality

Polyclonal

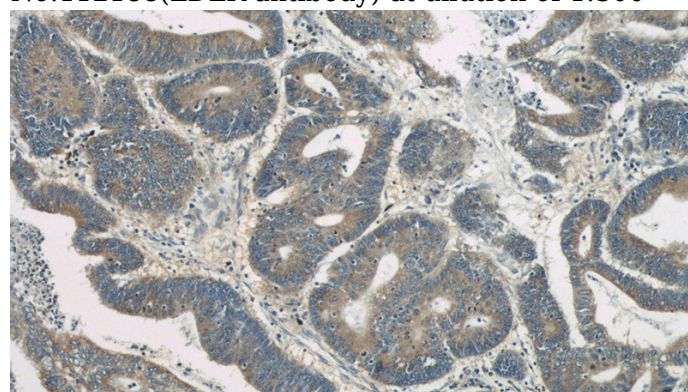
## Ig Type

Rabbit IgG

## Applications

ELISA, WB, IHC, IP, FC

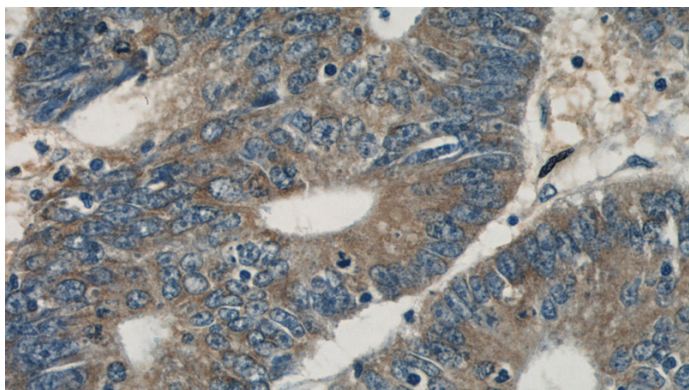
## Dilutions



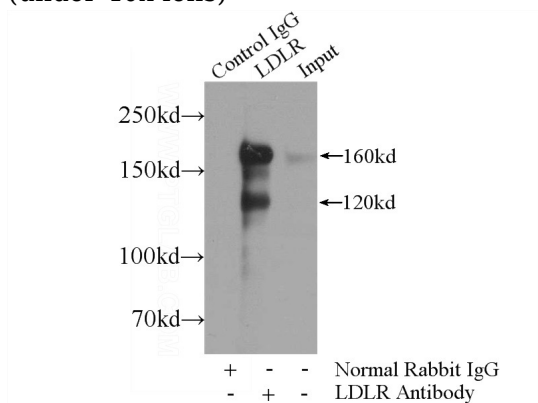
Immunohistochemical of paraffin-embedded human colon cancer using Catalog No:112188(LDLR antibody) at dilution of 1:50 (under 10x lens)

# LDLR antibody

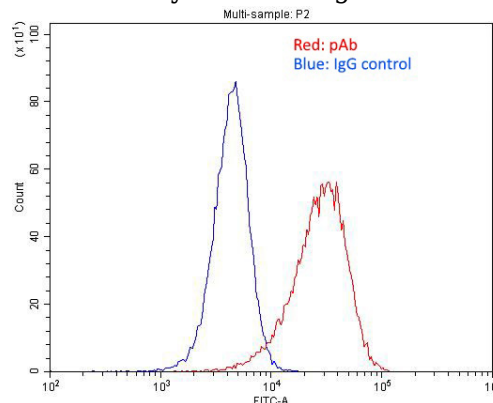
Catalog Number: 112188



Immunohistochemical of paraffin-embedded human colon cancer using Catalog No:112188(LDLR antibody) at dilution of 1:50 (under 40x lens)



IP Result of anti-LDLR (IP:Catalog No:112188, 5ug; Detection:Catalog No:112188 1:500) with HeLa cells lysate 1200ug.



1X10<sup>6</sup> HeLa cells were stained with .2ug LDLR antibody (Catalog No:112188, red) and control antibody (blue). Fixed with 4% PFA blocked with 3% BSA (30 min). Alexa Fluor 488-conjugated AffiniPure Goat Anti-Rabbit IgG(H+L) with dilution 1:1500.