

LBR antibody



Catalog Number: 112162

Product name

LBR antibody

IP: 1:200-1:2000

IF: 1:10-1:100

Specificity

Human, Mouse, Rat; other species not tested.

Antibody description

LBR Rabbit Polyclonal antibody. Positive IF detected in HepG2 cells, Hela cells. Positive FC detected in Jurkat cells. Positive WB detected in A375 cells, human brain tissue. Positive IP detected in A375 cells. Observed molecular weight by Western-blot: 58 kDa

Preparation

This antibody was obtained by immunization of LBR recombinant protein (Accession Number: XM_011544185). Purification method: Antigen affinity purified.

Formulation

PBS with 0.1% sodium azide and 50% glycerol pH 7.3.

Storage

Store at -20°C. DO NOT ALIQUOT

Clonality

Polyclonal

Ig Type

Rabbit IgG

Applications

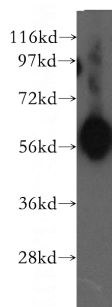
ELISA, WB, IF, IP, FC

Dilutions

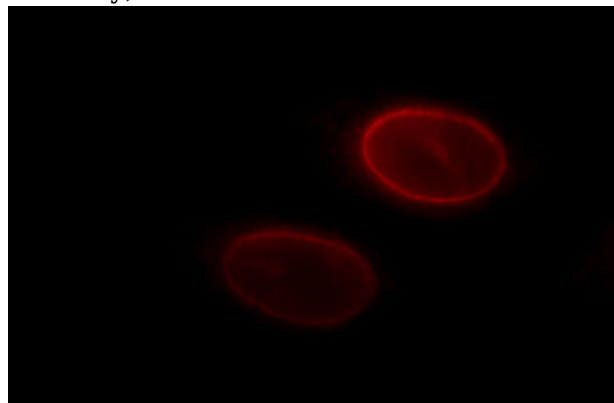
Recommended Dilution:

WB: 1:1000-1:10000

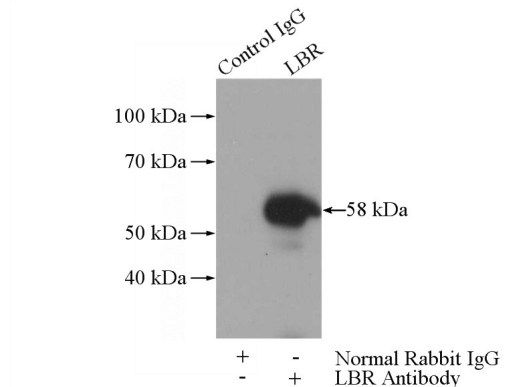
Validations



A375 cells were subjected to SDS PAGE followed by western blot with Catalog No:112162(LBR antibody) at dilution of 1:500

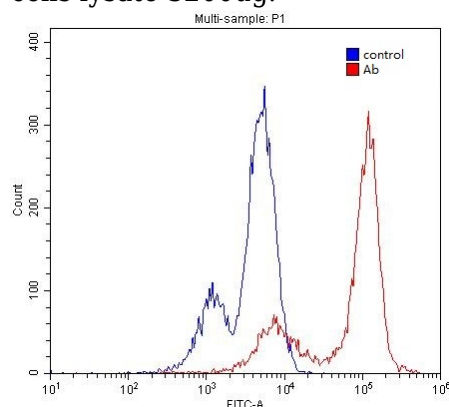


Immunofluorescent analysis of HepG2 cells, using LBR antibody Catalog No:112162 at 1:25 dilution and Rhodamine-labeled goat anti-rabbit IgG (red).



IP Result of anti-LBR (IP:Catalog No:112162, 3ug; Detection:Catalog No:112162 1:500) with A375

cells lysate 3200ug.



1×10^6 Jurkat cells were stained with 0.2ug LBR antibody (Catalog No:112162, red) and control antibody (blue). Fixed with 4% PFA blocked with 3% BSA (30 min). Alexa Fluor 488-conjugated AffiniPure Goat Anti-Rabbit IgG(H+L) with dilution 1:1500.