

KRAS antibody

Catalog Number: 112119

Product name

KRAS antibody

Specificity

Human, Mouse, Rat; other species not tested.

Antibody description

KRAS Rabbit Polyclonal antibody. Positive WB detected in mouse brain tissue, A549 cells, HEK-293 cells, HeLa cells, human brain tissue, human kidney tissue, mouse kidney tissue, rat brain tissue, rat kidney tissue. Positive IP detected in HeLa cells. Positive IHC detected in human colon cancer tissue, human breast cancer tissue, human lung cancer tissue. Positive FC detected in HeLa cells. Observed molecular weight by Western-blot: 21 kDa

Preparation

This antibody was obtained by immunization of KRAS recombinant protein (Accession Number: XM_011520653). Purification method: Antigen affinity purified.

Formulation

PBS with 0.1% sodium azide and 50% glycerol pH 7.3.

Storage

Store at -20°C. DO NOT ALIQUOT

Clonality

Polyclonal

Ig Type

Rabbit IgG

Applications

ELISA, WB, IP, FC, IHC

Dilutions

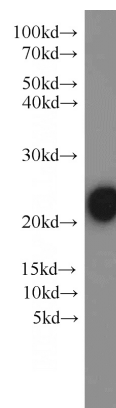
Recommended Dilution:

WB: 1:500-1:5000

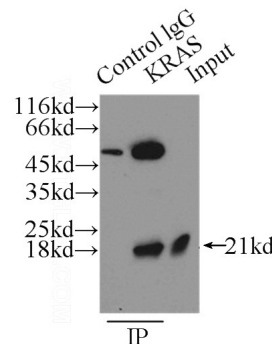
IP: 1:500-1:5000

IHC: 1:20-1:200

Validations



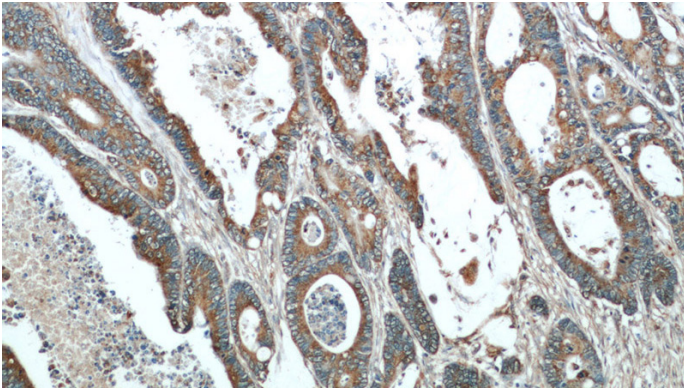
mouse brain tissue were subjected to SDS PAGE followed by western blot with Catalog No:112119(KRAS antibody) at dilution of 1:1000



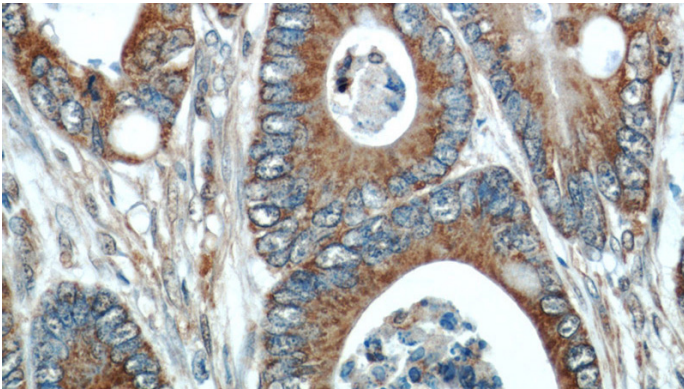
IP Result of anti-KRAS (IP:Catalog No:112119, 3ug; Detection:Catalog No:112119 1:1000) with HeLa cells lysate 2500ug.

KRAS antibody

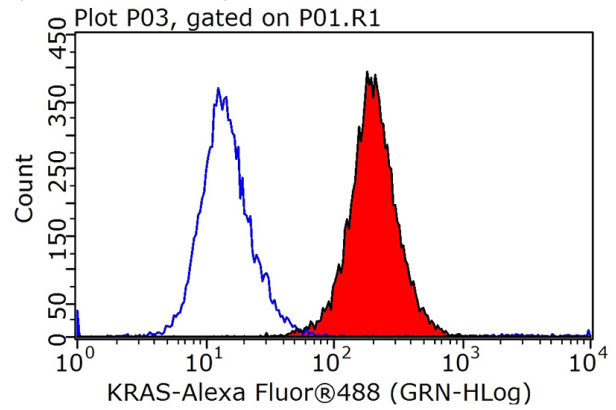
Catalog Number: 112119



Immunohistochemical of paraffin-embedded human colon cancer using Catalog No:112119(KRAS antibody) at dilution of 1:50 (under 10x lens)



Immunohistochemical of paraffin-embedded human colon cancer using Catalog No:112119(KRAS antibody) at dilution of 1:50 (under 40x lens)



1×10^6 HeLa cells were stained with 0.2ug KRAS antibody (Catalog No:112119, red) and control antibody (blue). Fixed with 90% MeOH blocked with 3% BSA (30 min). Alexa Fluor 488-conjugated AffiniPure Goat Anti-Rabbit IgG(H+L) with dilution 1:1000.