

KIR2DL3 antibody



Catalog Number: 112060

Product name

KIR2DL3 antibody

Immunogen

[Human KIR2DL3 Recombinant protein \(His tag\)](#)

Specificity

human; other species not tested.

Antibody description

KIR2DL3 Rabbit Polyclonal antibody. Positive WB detected in human liver tissue. Observed molecular weight by Western-blot: 58 kDa

Preparation

This antibody was obtained by immunization of KIR2DL3 recombinant protein (Accession Number: NM_015868). Purification method: Antigen affinity purified.

Formulation

PBS with 0.02% sodium azide and 50% glycerol pH 7.3.

Storage

Store at -20°C. DO NOT ALIQUOT

Clonality

Polyclonal

Ig Type

Rabbit IgG

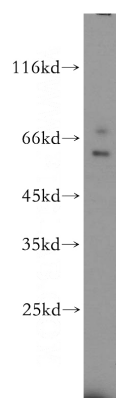
Applications

ELISA, WB

Dilutions

Recommended Dilution:
WB: 1:200-1:2000

Validations



human liver tissue were subjected to SDS PAGE followed by western blot with Catalog No:112060(KIR2DL3 antibody) at dilution of 1:500