

# KDSR antibody



Catalog Number: 112031

## Product name

KDSR antibody

## Specificity

human, mouse, rat; other species not tested.

## Antibody description

KDSR Rabbit Polyclonal antibody. Positive IHC detected in human placenta. Positive WB detected in human stomach tissue. Observed molecular weight by Western-blot: 36kd

## Preparation

This antibody was obtained by immunization of KDSR recombinant protein (Accession Number: NM\_002035). Purification method: Antigen affinity purified.

## Formulation

PBS with 0.02% sodium azide and 50% glycerol pH 7.3.

## Storage

Store at -20°C. DO NOT ALIQUOT

## Clonality

Polyclonal

## Ig Type

Rabbit IgG

## Applications

ELISA, WB, IHC

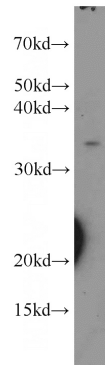
## Dilutions

Recommended Dilution:

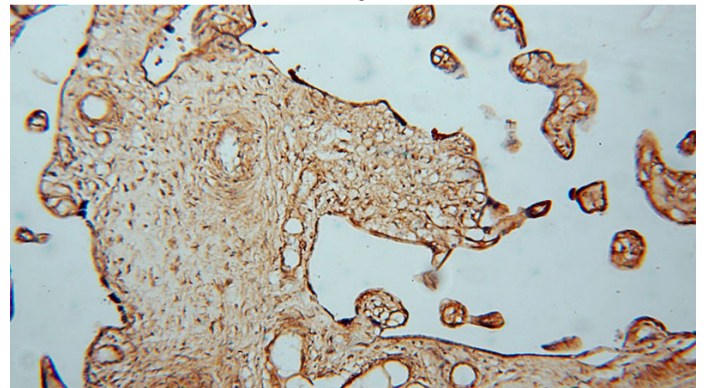
WB: 1:200-1:2000

IHC: 1:20-1:200

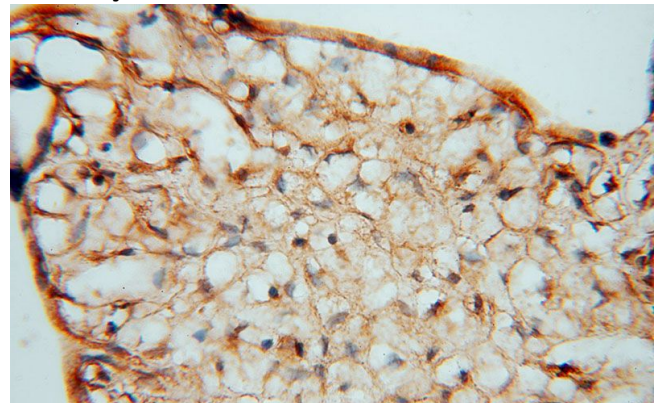
## Validations



human stomach tissue were subjected to SDS PAGE followed by western blot with Catalog No:112031(KDSR antibody) at dilution of 1:800



Immunohistochemical of paraffin-embedded human placenta using Catalog No:112031(KDSR antibody) at dilution of 1:50 (under 10x lens)



Immunohistochemical of paraffin-embedded human placenta using Catalog No:112031(KDSR antibody) at dilution of 1:50 (under 40x lens)