

# KIF5A antibody

Catalog Number: 112016

## Product name

KIF5A antibody

IP: 1:1000-1:10000

IHC: 1:20-1:200

## Specificity

Human, Mouse, Rat; other species not tested.

## Antibody description

KIF5A Rabbit Polyclonal antibody. Positive IHC detected in human brain tissue. Positive IP detected in mouse brain tissue. Positive WB detected in mouse brain tissue. Observed molecular weight by Western-blot: 118-120 kDa

## Preparation

This antibody was obtained by immunization of KIF5A recombinant protein (Accession Number: NM\_004984). Purification method: Antigen affinity purified.

## Formulation

PBS with 0.02% sodium azide and 50% glycerol pH 7.3.

## Storage

Store at -20°C. DO NOT ALIQUOT

## Clonality

Polyclonal

## Ig Type

Rabbit IgG

## Applications

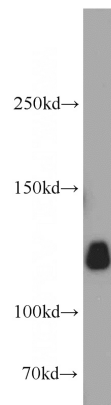
ELISA, WB, IHC, IP

## Dilutions

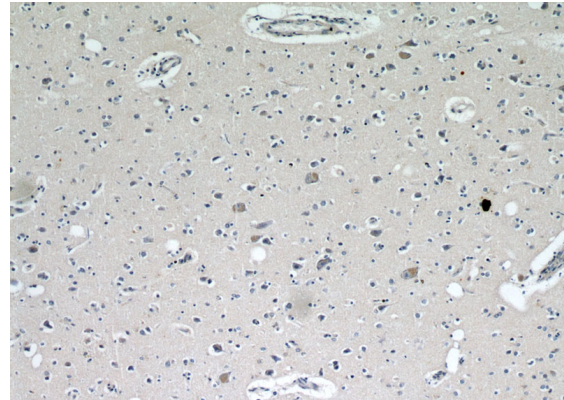
Recommended Dilution:

WB: 1:1000-1:10000

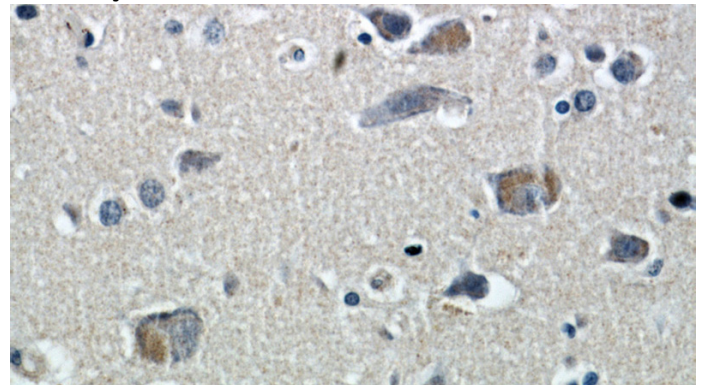
## Validations



mouse brain tissue were subjected to SDS PAGE followed by western blot with Catalog No:112016(KIF5A antibody) at dilution of 1:2000



Immunohistochemical of paraffin-embedded human brain using Catalog No:112016(KIF5A antibody) at dilution of 1:100 (under 10x lens)



Immunohistochemical of paraffin-embedded human brain using Catalog No:112016(KIF5A

# KIF5A antibody

Catalog Number: 112016

---

antibody) at dilution of 1:100 (under 40x lens)

IP Result of anti-KIF5A (IP:Catalog No:112016, 4ug; Detection:Catalog No:112016 1:2000) with mouse brain tissue lysate 4000ug.

