

ITPR1-specific antibody



Catalog Number: 111960

Product name

ITPR1-specific antibody

Specificity

Human, Mouse, Rat; other species not tested.

Antibody description

ITPR1-specific Rabbit Polyclonal antibody. Positive WB detected in mouse brain tissue, mouse liver tissue. Positive FC detected in HepG2 cells. Positive IHC detected in human testis tissue. Observed molecular weight by Western-blot: 290-300 kDa

Preparation

This antibody was obtained by immunization of Peptide (Accession Number: NM_001099952). Purification method: Antigen affinity purified.

Formulation

PBS with 0.02% sodium azide and 50% glycerol pH 7.3.

Storage

Store at -20°C. DO NOT ALIQUOT

Clonality

Polyclonal

Ig Type

Rabbit IgG

Applications

ELISA, WB, IHC, FC

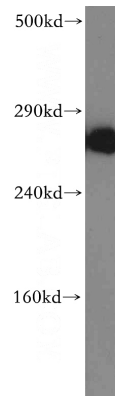
Dilutions

Recommended Dilution:

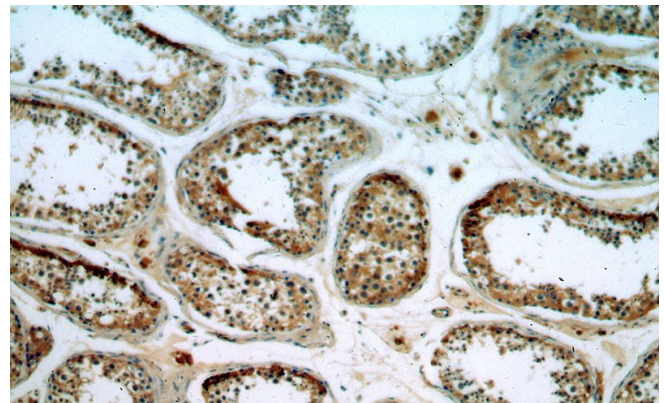
WB: 1:500-1:5000

IHC: 1:20-1:200

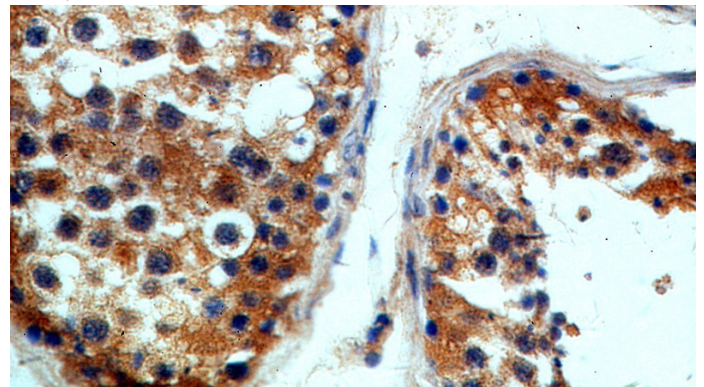
Validations



mouse brain tissue were subjected to SDS PAGE followed by western blot with Catalog No:111960(ITPR1-specific antibody) at dilution of 1:300



Immunohistochemical of paraffin-embedded human testis using Catalog No:111960(ITPR1-specific antibody) at dilution of 1:100 (under 10x lens)



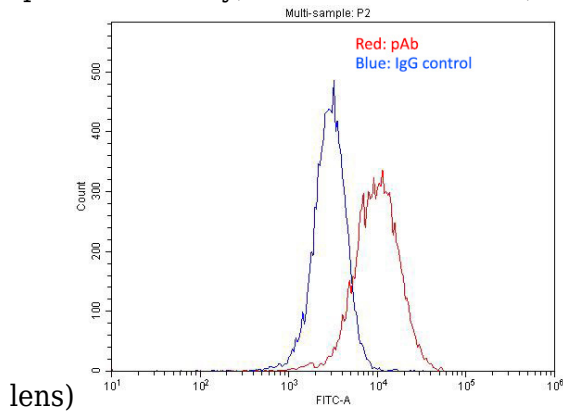
Immunohistochemical of paraffin-embedded human testis using Catalog No:111960(ITPR1-

ITPR1-specific antibody



Catalog Number: 111960

specific antibody) at dilution of 1:100 (under 40x



1×10^6 HepG2 cells were stained with .2ug ITPR1-specific antibody (Catalog No:111960, red) and control antibody (blue). Fixed with 4% PFA blocked with 3% BSA (30 min). Alexa Fluor 488-conjugated AffiniPure Goat Anti-Rabbit IgG(H+L) with dilution 1:1500.