

ITM2A antibody



Catalog Number: 111952

Product name

ITM2A antibody

Specificity

Human, Mouse, Rat; other species not tested.

Antibody description

ITM2A Rabbit Polyclonal antibody. Positive WB detected in Jurkat cells, HepG2 cells, mouse lung tissue. Positive IHC detected in human lymphoma tissue. Observed molecular weight by Western-blot: 45-48kd, 30kd

Preparation

This antibody was obtained by immunization of ITM2A recombinant protein (Accession Number: NM_004867). Purification method: Antigen affinity purified.

Formulation

PBS with 0.02% sodium azide and 50% glycerol pH 7.3.

Storage

Store at -20°C. DO NOT ALIQUOT

Clonality

Polyclonal

Ig Type

Rabbit IgG

Applications

ELISA, WB, IHC

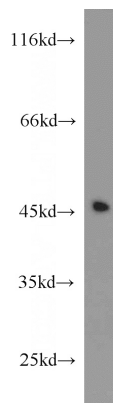
Dilutions

Recommended Dilution:

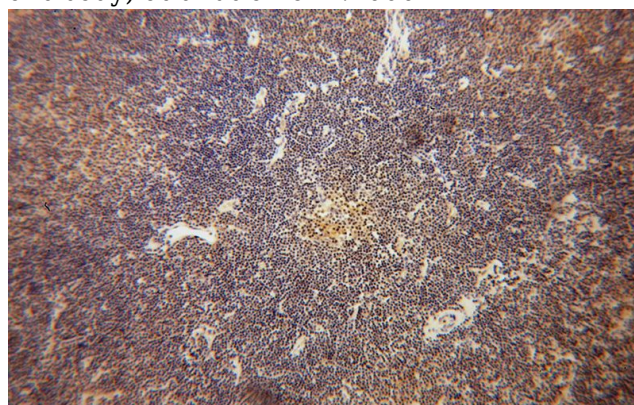
WB: 1:500-1:5000

IHC: 1:20-1:200

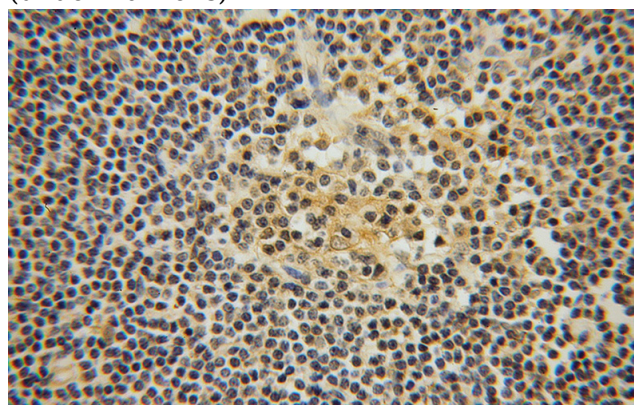
Validations



Jurkat cells were subjected to SDS PAGE followed by western blot with Catalog No:111952(ITM2A antibody) at dilution of 1:1000



Immunohistochemical of paraffin-embedded human lymphoma using Catalog No:111952(ITM2A antibody) at dilution of 1:50 (under 10x lens)



Immunohistochemical of paraffin-embedded human lymphoma using Catalog

ITM2A antibody



Catalog Number: 111952

No:111952(ITM2A antibody) at dilution of 1:50 (under 40x lens)