

ISG20 antibody

Catalog Number: 111938

Product name

ISG20 antibody

Immunogen

Specificity

Human, Mouse, Rat; other species not tested.

Antibody description

ISG20 Rabbit Polyclonal antibody. Positive IHC detected in human colon tissue. Positive WB detected in Raji cells. Observed molecular weight by Western-blot: 20kd

Preparation

This antibody was obtained by immunization of ISG20 recombinant protein (Accession Number: NM_002201). Purification method: Antigen affinity purified.

Formulation

PBS with 0.02% sodium azide and 50% glycerol pH 7.3.

Storage

Store at -20°C. DO NOT ALIQUOT

Clonality

Polyclonal

Ig Type

Rabbit IgG

Applications

ELISA, WB, IHC

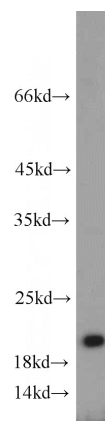
Dilutions

Recommended Dilution:

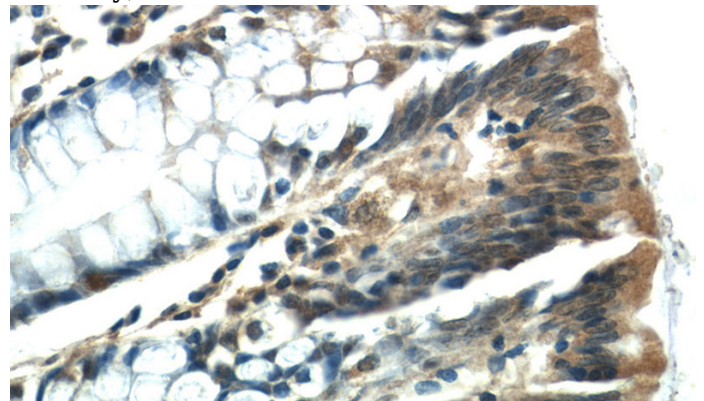
WB: 1:500-1:5000

IHC: 1:20-1:200

Validations



Raji cells were subjected to SDS PAGE followed by western blot with Catalog No:111938(ISG20 antibody) at dilution of 1:1000



Immunohistochemistry of paraffin-embedded human colon tissue slide using Catalog No:111938(ISG20 Antibody) at dilution of 1:50 (under 40x lens)