

# ISG15 antibody

Catalog Number: 111937

## Product name

ISG15 antibody

IP: 1:200-1:2000

IHC: 1:20-1:200

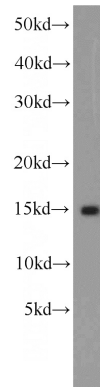
## Specificity

Human; other species not tested.

## Validations

## Antibody description

ISG15 Rabbit Polyclonal antibody. Positive IHC detected in human lung cancer tissue, human pancreas cancer tissue. Positive IP detected in HeLa cells. Positive WB detected in human brain tissue. Observed molecular weight by Western-blot: 15-17 kDa



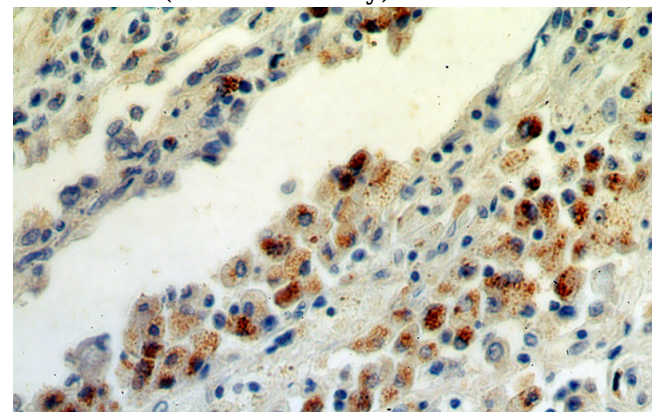
## Preparation

This antibody was obtained by immunization of ISG15 recombinant protein (Accession Number: NM\_005101). Purification method: Antigen affinity purified.

human brain tissue were subjected to SDS PAGE followed by western blot with Catalog No:111937(ISG15 antibody) at dilution of 1:500

## Formulation

PBS with 0.02% sodium azide and 50% glycerol pH 7.3.



## Storage

Store at -20°C. DO NOT ALIQUOT

## Clonality

Polyclonal

Immunohistochemical of paraffin-embedded human lung cancer using Catalog No:111937(ISG15 antibody) at dilution of 1:50

## Ig Type

Rabbit IgG

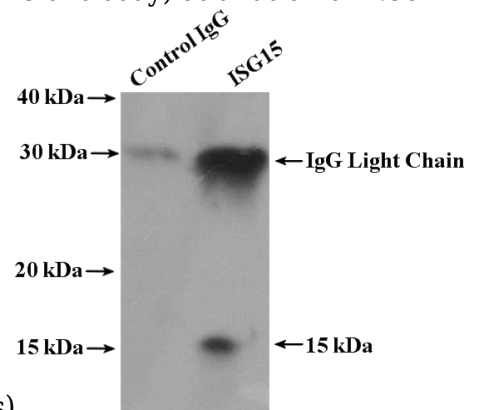
## Applications

ELISA, WB, IHC, IP

## Dilutions

Recommended Dilution:

WB: 1:200-1:2000



(under 40x lens)

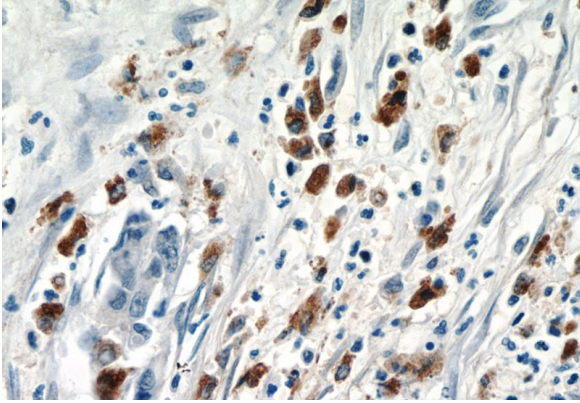
IP Result of anti-ISG15 (IP:Catalog No:111937,

# ISG15 antibody

Catalog Number: 111937

---

4ug; Detection:Catalog No:111937 1:500) with HeLa cells lysate 3200ug.



Immunohistochemistry of paraffin-embedded human pancreas cancer tissue slide using Catalog No:111937(ISG15 Antibody) at dilution of 1:50 (under 40x lens)