

KAP1 antibody

Catalog Number: 111911

Product name

KAP1 antibody

WB: 1:1000-1:10000

IP: 1:500-1:5000

Specificity

Human, Mouse, Rat; other species not tested.

IHC: 1:20-1:200

IF: 1:10-1:100

Antibody description

KAP1 Rabbit Polyclonal antibody. Positive IHC detected in human colon cancer tissue. Positive IF detected in HeLa cells. Positive FC detected in HeLa cells. Positive IP detected in HeLa cells. Positive WB detected in HeLa cells, mouse testis tissue, rat spleen tissue. Observed molecular weight by Western-blot: 100kd

Validations



Preparation

This antibody was obtained by immunization of KAP1 recombinant protein (Accession Number: NM_005762). Purification method: Antigen affinity purified.

HeLa cells were subjected to SDS PAGE followed by western blot with Catalog No:111911(KAP1 antibody) at dilution of 1:3000

Formulation

PBS with 0.02% sodium azide and 50% glycerol pH 7.3.

Storage

Store at -20°C. DO NOT ALIQUOT

Clonality

Polyclonal

Ig Type

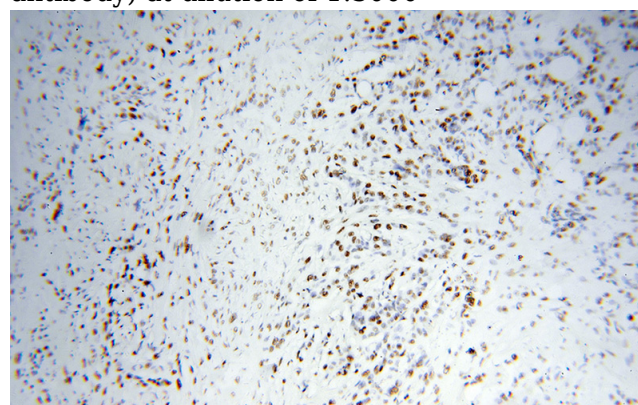
Rabbit IgG

Applications

ELISA, WB, IHC, IF, FC, IP

Dilutions

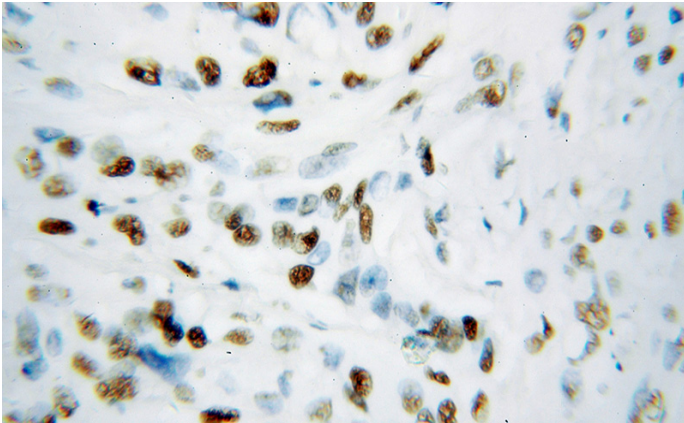
Recommended Dilution:



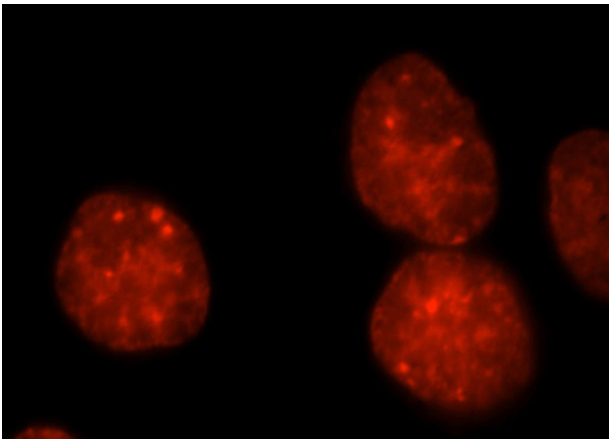
Immunohistochemical of paraffin-embedded human colon cancer using Catalog No:111911(KAP1 antibody) at dilution of 1:100 (under 10x lens)

KAP1 antibody

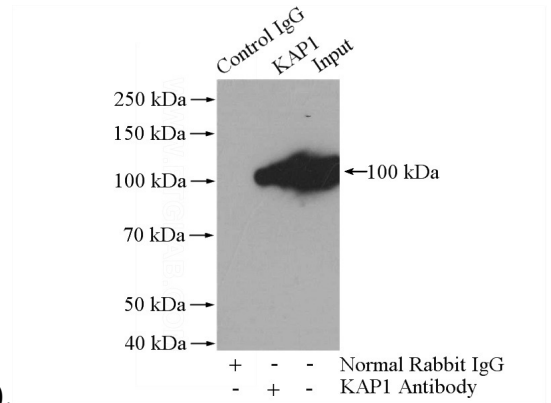
Catalog Number: 111911



Immunohistochemical of paraffin-embedded human colon cancer using Catalog No:111911(KAP1 antibody) at dilution of 1:100 (under 40x lens)

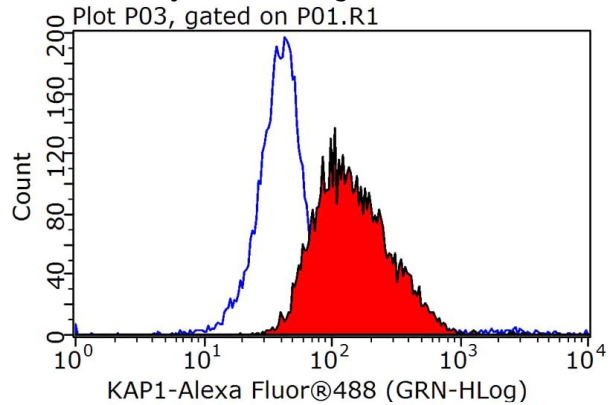


Immunofluorescent analysis of HeLa cells, using TRIM28 antibody Catalog No:111911 at 1:25 dilution and Rhodamine-labeled goat anti-rabbit



IgG (red).

IP Result of anti-KAP1 (IP:Catalog No:111911, 4ug; Detection:Catalog No:111911 1:1000) with HeLa cells lysate 1200ug.



1X10⁶ HeLa cells were stained with 0.2ug KAP1 antibody (Catalog No:111911, red) and control antibody (blue). Fixed with 90% MeOH blocked with 3% BSA (30 min). Alexa Fluor 488-conjugated AffiniPure Goat Anti-Rabbit IgG(H+L) with dilution 1:1000.