

INSIG2 antibody

Catalog Number: 111849

Product name

INSIG2 antibody

IP: 1:200-1:2000

IHC: 1:20-1:200

Specificity

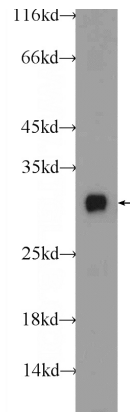
Human, Mouse, Rat; other species not tested.

IF: 1:10-1:100

Antibody description

INSIG2 Rabbit Polyclonal antibody. Positive IP detected in mouse liver tissue. Positive WB detected in rat liver tissue. Positive IF detected in HepG2 cells. Positive IHC detected in human liver tissue. Observed molecular weight by Western-blot: 30 kDa

Validations



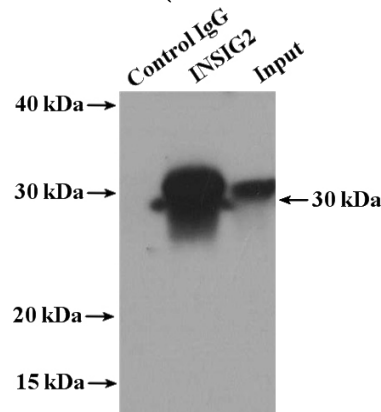
Preparation

This antibody was obtained by immunization of INSIG2 recombinant protein (Accession Number: XM_047444640). Purification method: Antigen affinity purified.

rat liver tissue were subjected to SDS PAGE followed by western blot with Catalog No:111849(INSIG2 Antibody) at dilution of 1:1000

Formulation

PBS with 0.1% sodium azide and 50% glycerol pH 7.3.



Storage

Store at -20°C. DO NOT ALIQUOT

Clonality

Polyclonal

Ig Type

Rabbit IgG

Applications

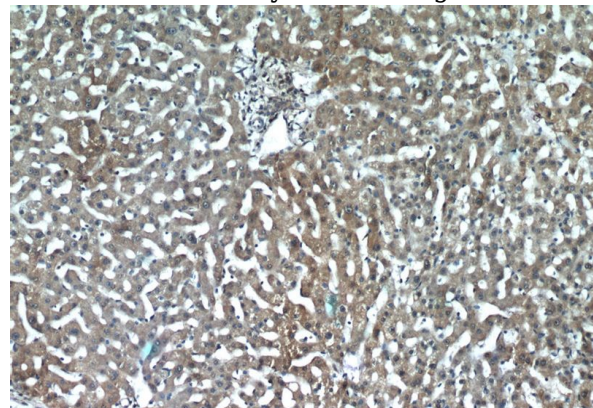
ELISA, WB, IHC, IF, IP

Dilutions

Recommended Dilution:

WB: 1:500-1:5000

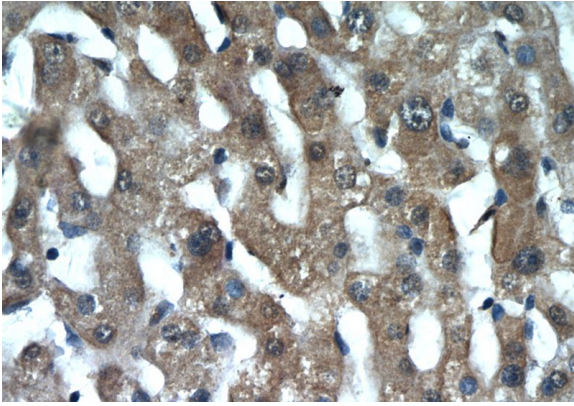
IP Result of anti-INSIG2 (IP:Catalog No:111849, 4ug; Detection:Catalog No:111849 1:500) with mouse liver tissue lysate 3600ug.



INSIG2 antibody

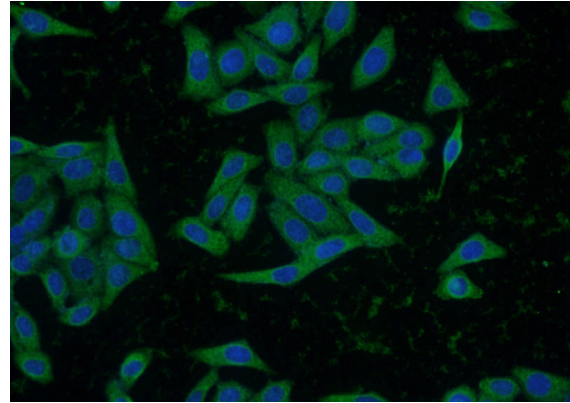
Catalog Number: 111849

Immunohistochemistry of paraffin-embedded human liver tissue slide using Catalog No:111849(INSIG2 Antibody) at dilution of 1:50 (under 10x lens)



Immunohistochemistry of paraffin-embedded human liver tissue slide using Catalog

No:111849(INSIG2 Antibody) at dilution of 1:50 (under 40x lens)



Immunofluorescent analysis of HepG2 cells using Catalog No:111849(INSIG2 Antibody) at dilution of 1:25 and Alexa Fluor 488-conjugated AffiniPure Goat Anti-Rabbit IgG(H+L)