

# IFI30 antibody



Catalog Number: 111615

---

## Product name

IFI30 antibody

## Specificity

Human; other species not tested.

## Antibody description

IFI30 Rabbit Polyclonal antibody. Positive WB detected in human colon tissue. Observed molecular weight by Western-blot: 29 kDa

## Preparation

This antibody was obtained by immunization of IFI30 recombinant protein (Accession Number: NM\_006332). Purification method: Antigen affinity purified.

## Formulation

PBS with 0.1% sodium azide and 50% glycerol pH 7.3.

## Storage

Store at -20°C. DO NOT ALIQUOT

## Clonality

Polyclonal

## Ig Type

Rabbit IgG

## Applications

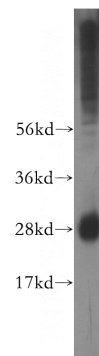
ELISA, WB

## Dilutions

Recommended Dilution:

WB: 1:500-1:5000

## Validations



human colon tissue were subjected to SDS PAGE followed by western blot with Catalog No:111615(IFI30 antibody) at dilution of 1:400