

HPSE antibody

Catalog Number: 111457

Product name

HPSE antibody

Specificity

Human, Mouse, Rat; other species not tested.

Antibody description

HPSE Rabbit Polyclonal antibody. Positive WB detected in DU 145 cells. Positive IHC detected in human liver cancer tissue, human placenta tissue, mouse kidney tissue. Observed molecular weight by Western-blot: 65 kDa, 50 kDa

Preparation

This antibody was obtained by immunization of HPSE recombinant protein (Accession Number: NM_001098540). Purification method: Antigen affinity purified.

Formulation

PBS with 0.02% sodium azide and 50% glycerol pH 7.3.

Storage

Store at -20°C. DO NOT ALIQUOT

Clonality

Polyclonal

Ig Type

Rabbit IgG

Applications

ELISA, IHC, WB

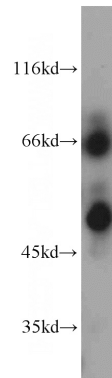
Dilutions

Recommended Dilution:

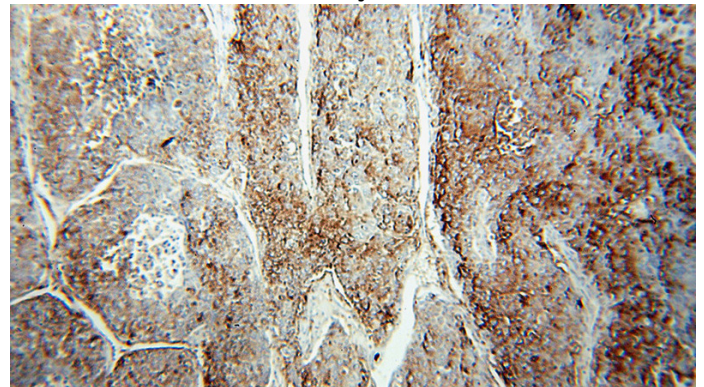
WB: 1:200-1:1000

IHC: 1:20-1:200

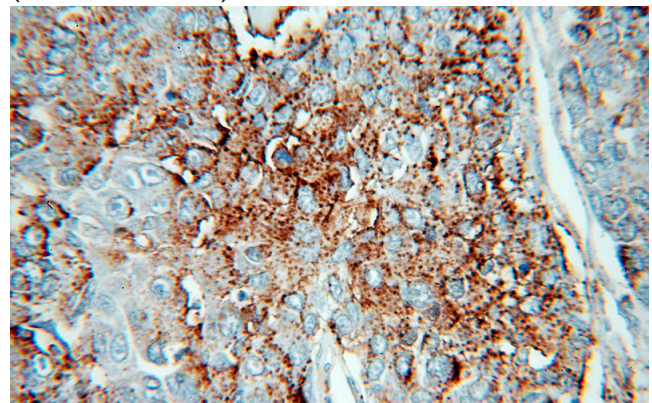
Validations



DU 145 cells were subjected to SDS PAGE followed by western blot with Catalog No:111457(HPSE antibody) at dilution of 1:300



Immunohistochemical of paraffin-embedded human liver cancer using Catalog No:111457(HPSE antibody) at dilution of 1:50 (under 10x lens)



Immunohistochemical of paraffin-embedded human liver cancer using Catalog No:111457(HPSE antibody) at dilution of 1:50

HPSE antibody



Catalog Number: 111457

(under 40x lens)