

HEY2 antibody

Catalog Number: 111309

General Information

Product name:

HEY2 antibody

Immunogen:

Applications:

ELISA, WB, IHC, IF, IP

Specificity:

Human, Mouse, Rat; other species not tested.

Antibody description:

HEY2 Rabbit Polyclonal antibody. Positive IP detected in mouse heart tissue. Positive WB detected in K-562 cells, 4T1 cells, human heart tissue, MCF-7 cells, mouse heart tissue. Positive IHC detected in human prostate cancer tissue. Positive IF detected in HepG2 cells. Observed molecular weight by Western-blot: 34-36 kDa

Properties

Preparation:

This antibody was obtained by immunization of HEY2 recombinant protein (Accession Number: BC007707). Purification method: Antigen affinity purified.

Formulation:

PBS with 0.1% sodium azide and 50% glycerol pH 7.3.

Storage:

Store at -20°C. DO NOT ALIQUOT

Clonality:

Polyclonal

Ig Type: Rabbit IgG

Applications

Recommended Dilution:

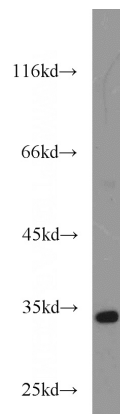
WB: 1:200-1:2000

IP: 1:200-1:2000

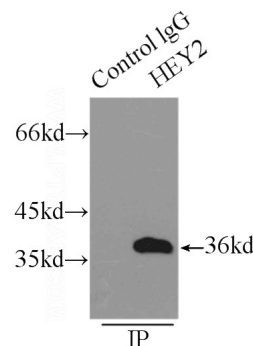
IHC: 1:20-1:200

IF: 1:20-1:200

Validations



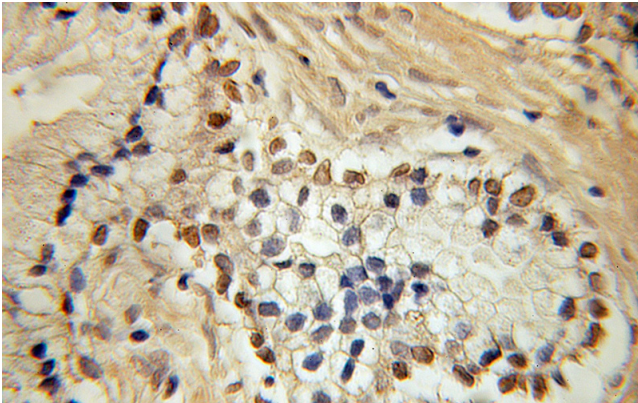
K-562 cells were subjected to SDS PAGE followed by western blot with Catalog No:111309(HEY2 antibody) at dilution of 1:500



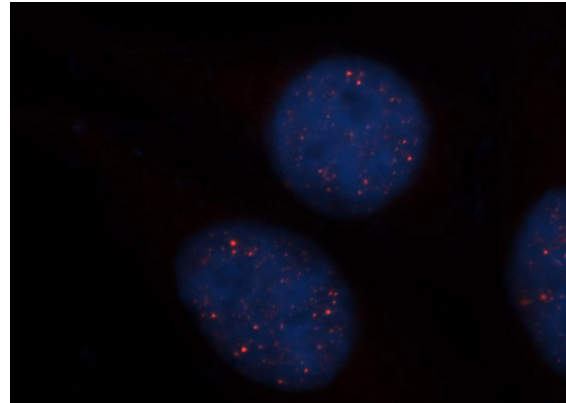
IP Result of anti-HEY2 (IP:Catalog No:111309, 5ug; Detection:Catalog No:111309 1:500) with mouse heart tissue lysate 7500ug.

HEY2 antibody

Catalog Number: 111309



Immunohistochemical of paraffin-embedded human prostate cancer using Catalog No:111309(HEY2 antibody) at dilution of 1:100 (under 10x lens)



Immunofluorescent analysis of HepG2 cells, using HEY2 antibody Catalog No:111309 at 1:50 dilution and Rhodamine-labeled goat anti-rabbit IgG (red). Blue pseudocolor = DAPI (fluorescent DNA dye).