

GMF-beta antibody



Catalog Number: 111098

Product name

GMF-beta antibody

Specificity

Human, Mouse, Rat; other species not tested.

Antibody description

GMF-beta Rabbit Polyclonal antibody. Positive IHC detected in human colon cancer tissue. Positive WB detected in rat brain tissue, human brain tissue, human heart tissue, mouse brain tissue, mouse heart tissue. Observed molecular weight by Western-blot: 17 kDa

Preparation

This antibody was obtained by immunization of GMF-beta recombinant protein (Accession Number: BC005359). Purification method: Antigen affinity purified.

Formulation

PBS with 0.1% sodium azide and 50% glycerol pH 7.3.

Storage

Store at -20°C. DO NOT ALIQUOT

Clonality

Polyclonal

Ig Type

Rabbit IgG

Applications

ELISA, IHC, WB

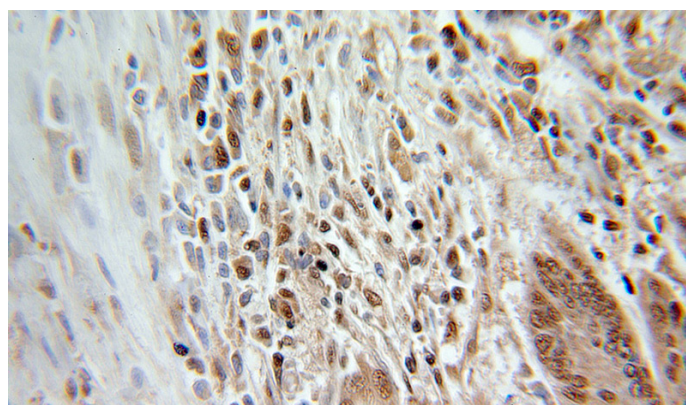
Dilutions

Recommended Dilution:

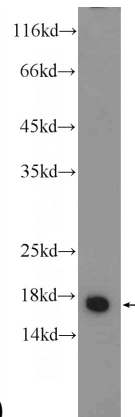
WB: 1:200-1:2000

IHC: 1:20-1:200

Validations



Immunohistochemical of paraffin-embedded human colon cancer using Catalog No:111098(GMFB antibody) at dilution of 1:100



(under 25x lens)

rat brain tissue were subjected to SDS PAGE followed by western blot with Catalog No:111098(GMFB Antibody) at dilution of 1:500