

Product name

GOPC antibody

Immunogen

[Human GOPC Recombinant protein \(GST tag\)](#)

Specificity

human, mouse, rat; other species not tested.

Antibody description

GOPC Rabbit Polyclonal antibody. Positive WB detected in K-562 cells, human colon tissue, human kidney tissue, human lung tissue. Positive IHC detected in human pancreas cancer. Observed molecular weight by Western-blot: 50kd

Preparation

This antibody was obtained by immunization of GOPC recombinant protein (Accession Number: NM_001017408). Purification method: Antigen affinity purified.

Formulation

PBS with 0.1% sodium azide and 50% glycerol pH 7.3.

Storage

Store at -20°C. DO NOT ALIQUOT

Clonality

Polyclonal

Ig Type

Rabbit IgG

Applications

ELISA, WB, IHC

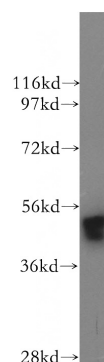
Dilutions

Recommended Dilution:

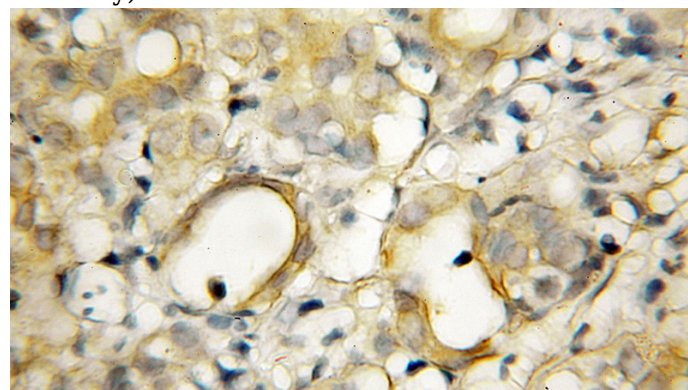
WB: 1:500-1:5000

IHC: 1:20-1:200

Validations



K-562 cells were subjected to SDS PAGE followed by western blot with Catalog No:111046(GOPC antibody) at dilution of 1:800



Immunohistochemical of paraffin-embedded human pancreas cancer using Catalog No:111046(GOPC antibody) at dilution of 1:50 (under 10x lens)