

Glucagon antibody

Catalog Number: 111040

Product name

Glucagon antibody

WB: 1:200-1:2000

IHC: 1:20-1:200

Immunogen

Specificity

Human, Mouse, Rat; other species not tested.

Antibody description

Glucagon Rabbit Polyclonal antibody. Positive IHC detected in human pancreas tissue, human colon tissue, human small intestine tissue, mouse small intestine tissue, rat small intestine tissue. Positive WB detected in Transfected HEK-293 cells.

Preparation

This antibody was obtained by immunization of Glucagon recombinant protein (Accession Number: NM_002054). Purification method: Antigen affinity purified.

Formulation

PBS with 0.02% sodium azide and 50% glycerol pH 7.3.

Storage

Store at -20°C. DO NOT ALIQUOT

Clonality

Polyclonal

Ig Type

Rabbit IgG

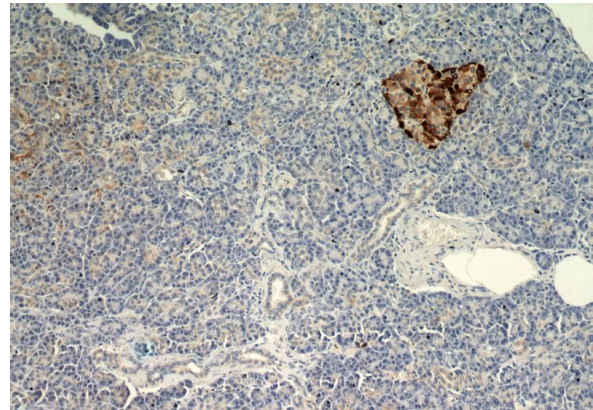
Applications

ELISA, IHC, WB

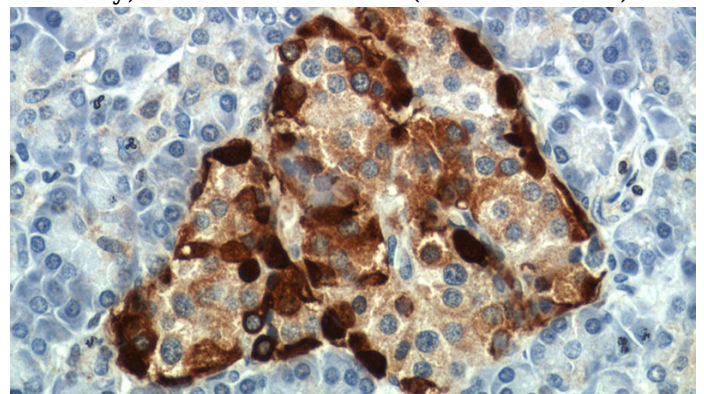
Dilutions

Recommended Dilution:

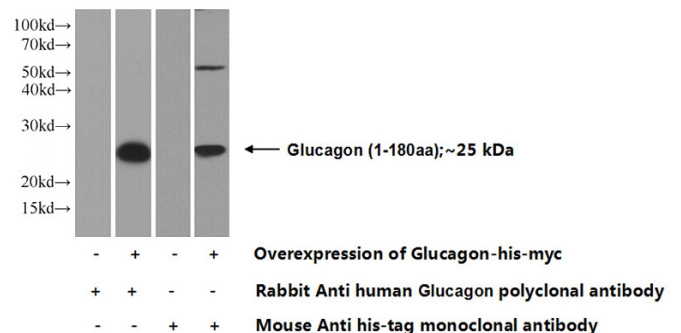
Validations



Immunohistochemical of paraffin-embedded human pancreas using Catalog No:111040(GCG antibody) at dilution of 1:200 (under 10x lens)



Immunohistochemical of paraffin-embedded human pancreas using Catalog No:111040(GCG antibody) at dilution of 1:200 (under 40x lens)



Transfected HEK-293 cells were subjected to SDS PAGE followed by western blot with Catalog No:111040(Glucagon Antibody) at dilution of

Glucagon antibody



Catalog Number: 111040

1:500