

# GFPT1 antibody



Catalog Number: 110951

## Product name

GFPT1 antibody

WB: 1:200-1:2000

IHC: 1:20-1:200

## Specificity

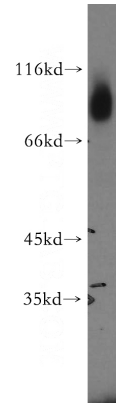
Human, Mouse, Rat, Zebrafish; other species not tested.

IF: 1:20-1:200

## Antibody description

GFPT1 Rabbit Polyclonal antibody. Positive IF detected in HepG2 cells. Positive IHC detected in human gliomas tissue, human hepat°Cirrhosis tissue. Positive WB detected in human skeletal muscle tissue, HepG2 cells. Observed molecular weight by Western-blot: 77kd

## Validations



## Preparation

This antibody was obtained by immunization of GFPT1 recombinant protein (Accession Number: NM\_002056). Purification method: Antigen affinity purified.

human skeletal muscle tissue were subjected to SDS PAGE followed by western blot with Catalog No:110951(GFPT1 antibody) at dilution of 1:500

## Formulation

PBS with 0.02% sodium azide and 50% glycerol pH 7.3.

## Storage

Store at -20°C. DO NOT ALIQUOT

## Clonality

Polyclonal

## Ig Type

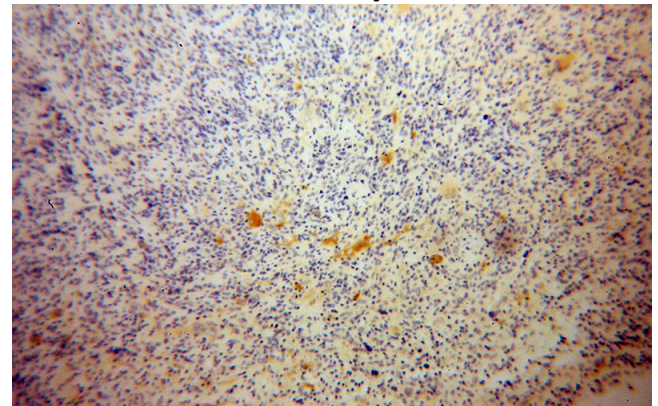
Rabbit IgG

## Applications

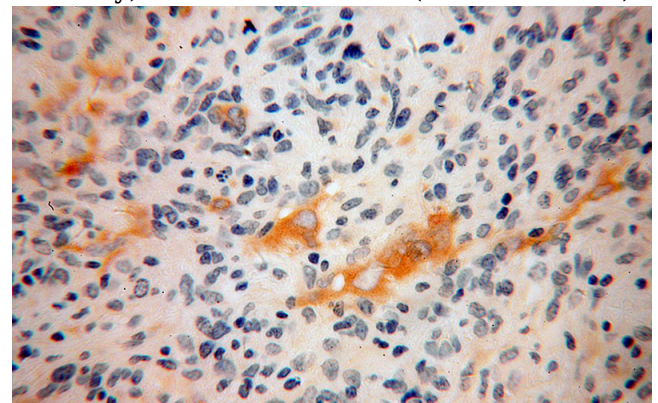
ELISA, IHC, IF, WB

## Dilutions

Recommended Dilution:



Immunohistochemical of paraffin-embedded human gliomas using Catalog No:110951(GFPT1 antibody) at dilution of 1:100 (under 10x lens)



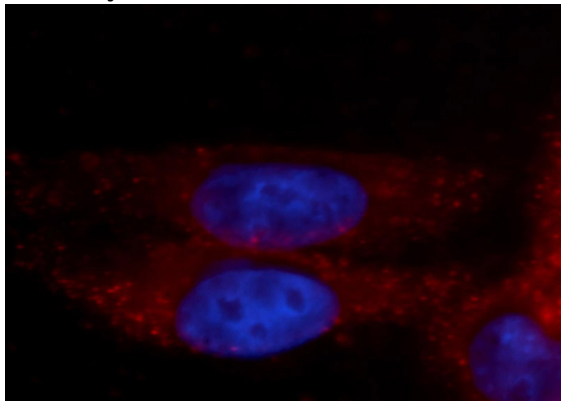
# GFPT1 antibody



Catalog Number: 110951

---

Immunohistochemical of paraffin-embedded human gliomas using Catalog No:110951(GFPT1 antibody) at dilution of 1:100 (under 40x lens)



Immunofluorescent analysis of HepG2 cells, using GFPT1 antibody Catalog No:110951 at 1:100 dilution and PE-labeled goat anti-rabbit IgG(red). Blue pseudocolor = DAPI (fluorescent DNA dye).