

# Fibulin 5 antibody



Catalog Number: 110661

## Product name

Fibulin 5 antibody

WB: 1:200-1:2000

IP: 1:200-1:1000

## Specificity

Human, Mouse, Rat; other species not tested.

IHC: 1:20-1:200

## Antibody description

Fibulin 5 Rabbit Polyclonal antibody. Positive IHC detected in human lung cancer tissue, human heart tissue, human pancreas tissue. Positive IP detected in mouse heart tissue. Positive WB detected in mouse heart tissue, mouse placenta tissue, rat brain tissue. Observed molecular weight by Western-blot: 64-66 kDa

## Preparation

This antibody was obtained by immunization of Fibulin 5 recombinant protein (Accession Number: NM\_006329). Purification method: Antigen affinity purified.

## Formulation

PBS with 0.1% sodium azide and 50% glycerol pH 7.3.

## Storage

Store at -20°C. DO NOT ALIQUOT

## Clonality

Polyclonal

## Ig Type

Rabbit IgG

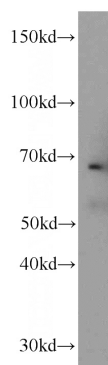
## Applications

ELISA, WB, IHC, IP

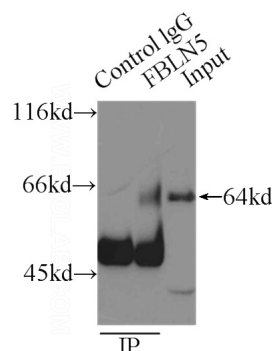
## Dilutions

Recommended Dilution:

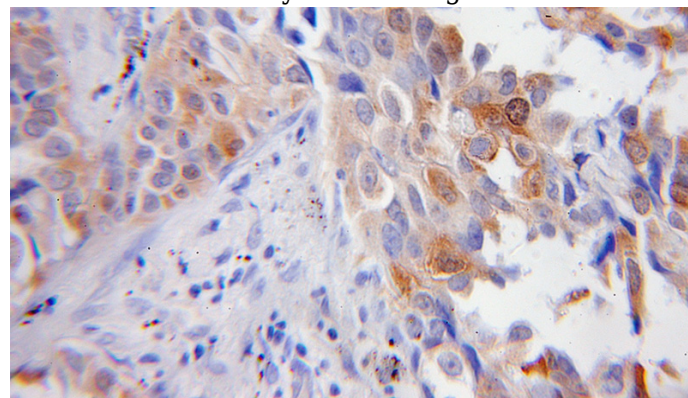
## Validations



mouse heart tissue were subjected to SDS PAGE followed by western blot with Catalog No:110661(FBLN5 antibody) at dilution of 1:400



IP Result of anti-FBLN5 (IP:Catalog No:110661, 3ug; Detection:Catalog No:110661 1:300) with mouse heart tissue lysate 8000ug.



# Fibulin 5 antibody



Catalog Number: 110661

---

Immunohistochemical of paraffin-embedded  
human lung cancer using Catalog

No:110661(FBLN5 antibody) at dilution of 1:50  
(under 10x lens)