

EZH2 antibody



Catalog Number: 110425

Product name

EZH2 antibody

WB: 1:1000-1:10000

IP: 1:500-1:5000

Specificity

Human, Mouse, Rat; other species not tested.

IF: 1:20-1:200

Antibody description

EZH2 Rabbit Polyclonal antibody. Positive IP detected in HepG2 cells. Positive WB detected in Raji cells, A431 cells, BxPC-3 cells, DU 145 cells, HEK-293 cells, HepG2 cells, Jurkat cells, mouse kidney tissue, NIH/3T3 cells, rat kidney tissue. Positive IF detected in HepG2 cells. Observed molecular weight by Western-blot: 90-102 kDa

Preparation

This antibody was obtained by immunization of EZH2 recombinant protein (Accession Number: NM_004456). Purification method: Antigen affinity purified.

Formulation

PBS with 0.02% sodium azide and 50% glycerol pH 7.3.

Storage

Store at -20°C. DO NOT ALIQUOT

Clonality

Polyclonal

Ig Type

Rabbit IgG

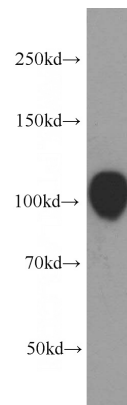
Applications

ELISA, WB, IP, IF

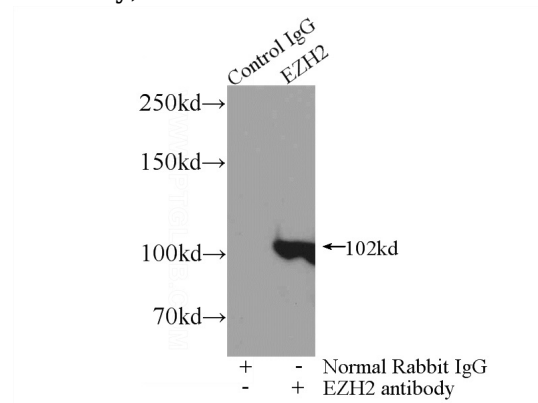
Dilutions

Recommended Dilution:

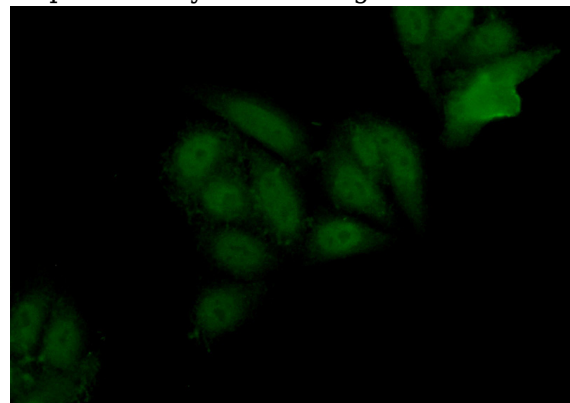
Validations



Raji cells were subjected to SDS PAGE followed by western blot with Catalog No:110425(EZH2 antibody) at dilution of 1:1500



IP Result of anti-EZH2 (IP:Catalog No:110425, 4ug; Detection:Catalog No:110425 1:1500) with HepG2 cells lysate 4000ug.



EZH2 antibody



Catalog Number: 110425

Immunofluorescent analysis of (10% Formaldehyde) fixed HepG2 cells using Catalog No:110425(EZH2 Antibody) at dilution of 1:50 and

Alexa Fluor 488-conjugated AffiniPure Goat Anti-Rabbit IgG(H+L)