

ENTPD3 antibody



Catalog Number: 110332

Product name

Polyclonal

ENTPD3 antibody

Ig Type

Specificity

Rabbit IgG

human, mouse, rat; other species not tested.

Applications

Antibody description

ELISA, WB

ENTPD3 Rabbit Polyclonal antibody. Positive WB detected in human brain tissue, Jurkat cells, Raji cells. Observed molecular weight by Western-blot: 59kd

Dilutions

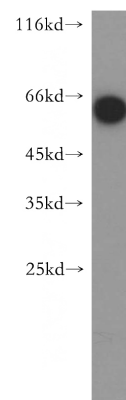
Recommended Dilution:

WB: 1:500-1:5000

Preparation

This antibody was obtained by immunization of ENTPD3 recombinant protein (Accession Number: NM_001291961). Purification method: Antigen affinity purified.

Validations



Formulation

PBS with 0.02% sodium azide and 50% glycerol pH 7.3.

Storage

Store at -20°C. DO NOT ALIQUOT

human brain tissue were subjected to SDS PAGE followed by western blot with Catalog No:110332(ENTPD3 antibody) at dilution of 1:500

Clonality