

ENTPD1 antibody



Catalog Number: 110330

Product name

ENTPD1 antibody

Immunogen

Specificity

Human, Mouse, Rat; other species not tested.

Antibody description

ENTPD1 Rabbit Polyclonal antibody. Positive WB detected in mouse placenta tissue. Positive IHC detected in human placenta tissue, human liver tissue, human tonsil tissue, human tonsillitis tissue. Positive IF detected in HeLa cells. Positive FC detected in Jurkat cells. Observed molecular weight by Western-blot: 50 kDa

Preparation

This antibody was obtained by immunization of ENTPD1 recombinant protein (Accession Number: NM_001164183). Purification method: Antigen affinity purified.

Formulation

PBS with 0.02% sodium azide and 50% glycerol pH 7.3.

Storage

Store at -20°C. DO NOT ALIQUOT

Clonality

Polyclonal

Ig Type

Rabbit IgG

Applications

ELISA, IHC, WB, FC, IF

Dilutions

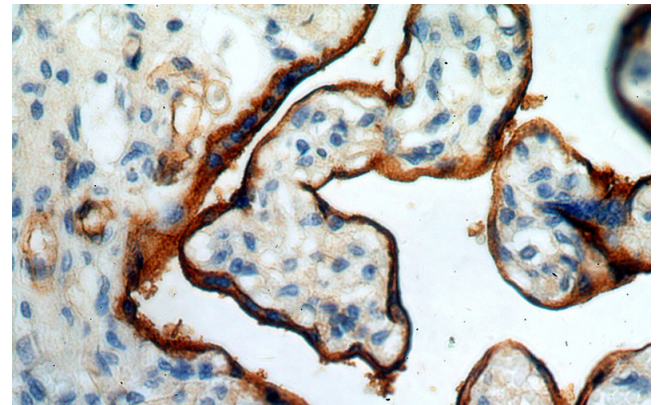
Recommended Dilution:

WB: 1:200-1:1000

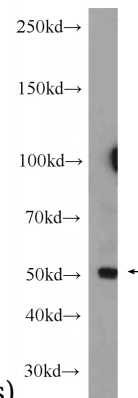
IHC: 1:20-1:200

IF: 1:20-1:200

Validations



Immunohistochemical of paraffin-embedded human placenta using Catalog No:110330(ENTPD1 antibody) at dilution of 1:50

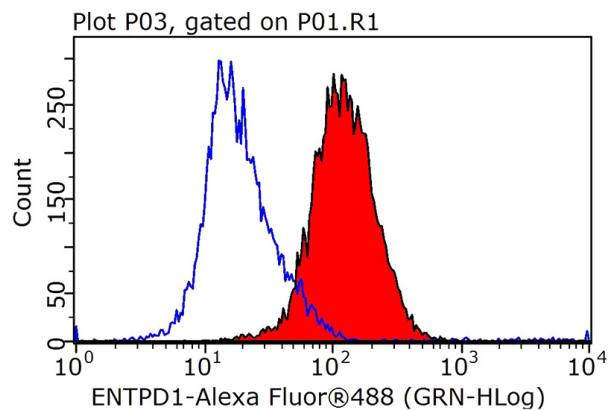
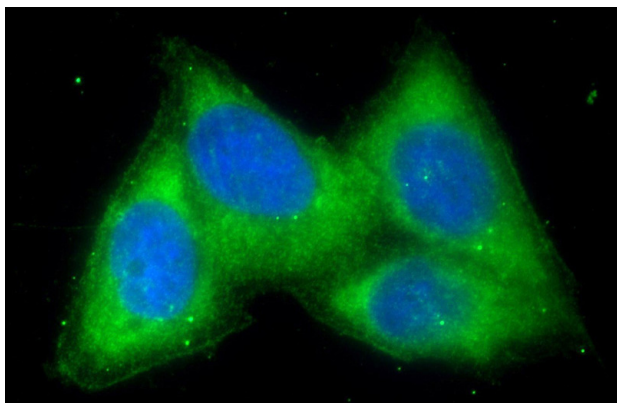


(under 40x lens)

mouse placenta tissue were subjected to SDS PAGE followed by western blot with Catalog No:110330(ENTPD1 Antibody) at dilution of 1:300

ENTPD1 antibody

Catalog Number: 110330



Immunofluorescent analysis of HeLa cells using Catalog No:110330(ENTPD1 Antibody) at dilution of 1:50 and Alexa Fluor 488-conjugated AffiniPure Goat Anti-Rabbit IgG(H+L)

1×10^6 Jurkat cells were stained with 0.5ug ENTPD1 antibody (Catalog No:110330, red) and control antibody (blue). Fixed with 90% MeOH blocked with 3% BSA (30 min). Alexa Fluor 488-conjugated AffiniPure Goat Anti-Rabbit IgG(H+L) with dilution 1:1000.