

# EEF2 antibody

Catalog Number: 110316

## Product name

EEF2 antibody

## Specificity

Human, Mouse; other species not tested.

## Antibody description

EEF2 Rabbit Polyclonal antibody. Positive IP detected in HeLa cells. Positive WB detected in HeLa cells, HEK-293 cells, HL-60 cells, Jurkat cells, NIH/3T3 cells. Positive IF detected in HepG2 cells. Positive IHC detected in human stomach cancer tissue, human breast cancer tissue. Observed molecular weight by Western-blot: 95kd,100kd

## Preparation

This antibody was obtained by immunization of EEF2 recombinant protein (Accession Number: NM\_001961). Purification method: Antigen affinity purified.

## Formulation

PBS with 0.02% sodium azide and 50% glycerol pH 7.3.

## Storage

Store at -20°C. DO NOT ALIQUOT

## Clonality

Polyclonal

## Ig Type

Rabbit IgG

## Applications

ELISA, WB, IHC, IF, IP

## Dilutions

Recommended Dilution:

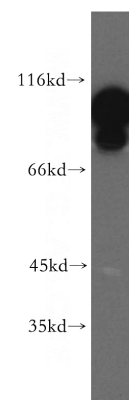
WB: 1:1000-1:10000

IP: 1:200-1:2000

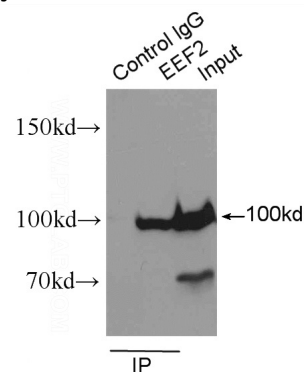
IHC: 1:20-1:200

IF: 1:10-1:100

## Validations



HeLa cells were subjected to SDS PAGE followed by western blot with Catalog No:110316(EEF2 antibody) at dilution of 1:500

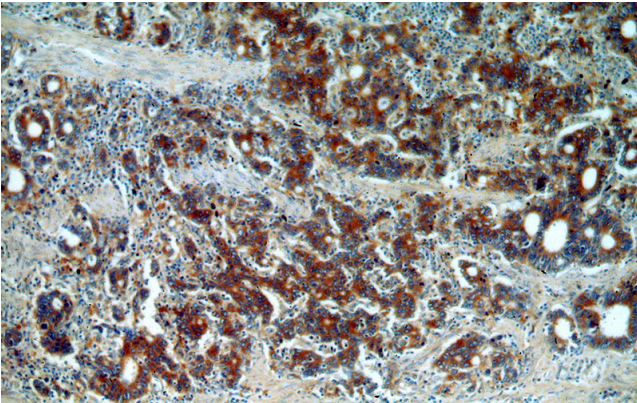


IP Result of anti-EEF2 (IP:Catalog No:110316, 3ug; Detection:Catalog No:110316 1:500) with HeLa cells lysate 1600ug.

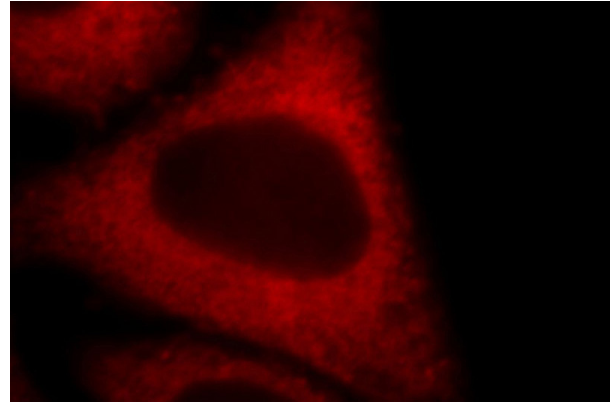
# EEF2 antibody

Catalog Number: 110316

---



Immunohistochemical of paraffin-embedded human stomach cancer using Catalog No:110316(EEF2 antibody) at dilution of 1:100 (under 40x lens)



Immunofluorescent analysis of HepG2 cells, using EEF2 antibody Catalog No:110316 at 1:25 dilution and Rhodamine-labeled goat anti-rabbit IgG (red).

Immunohistochemical of paraffin-embedded human stomach cancer using Catalog No:110316(EEF2 antibody) at dilution of 1:100 (under 10x lens)

