

EDIL3 antibody



Catalog Number: 110305

Product name

EDIL3 antibody

Immunogen

Specificity

Human, Mouse, Rat; other species not tested.

Antibody description

EDIL3 Rabbit Polyclonal antibody. Positive IHC detected in human pancreas cancer tissue, human liver cancer tissue, human lung cancer tissue. Positive WB detected in human lung tissue, COLO 320 cells, HEK-293 cells, HeLa cells, HepG2 cells, K-562 cells, mouse brain tissue, mouse lung tissue. Observed molecular weight by Western-blot: 52-55 kDa

Preparation

This antibody was obtained by immunization of EDIL3 recombinant protein (Accession Number: NM_005711). Purification method: Antigen affinity purified.

Formulation

PBS with 0.1% sodium azide and 50% glycerol pH 7.3.

Storage

Store at -20°C. DO NOT ALIQUOT

Clonality

Polyclonal

Ig Type

Rabbit IgG

Applications

ELISA, WB, IHC

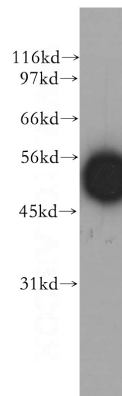
Dilutions

Recommended Dilution:

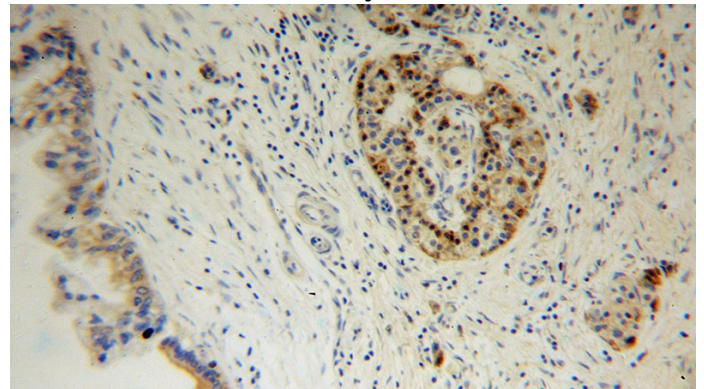
WB: 1:1000-1:10000

IHC: 1:20-1:200

Validations



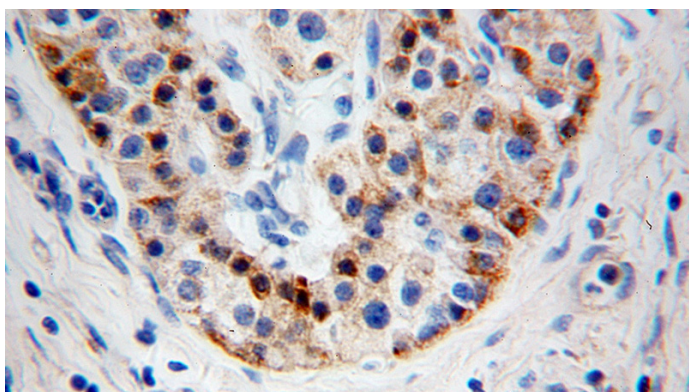
human lung tissue were subjected to SDS PAGE followed by western blot with Catalog No:110305(EDIL3 antibody) at dilution of 1:400



Immunohistochemical of paraffin-embedded human pancreas cancer using Catalog No:110305(EDIL3 antibody) at dilution of 1:100 (under 10x lens)

EDIL3 antibody

Catalog Number: 110305



Immunohistochemical of paraffin-embedded human pancreas cancer using Catalog No:110305(EDIL3 antibody) at dilution of 1:100 (under 40x lens)