

# ECH1 antibody

Catalog Number: 110292

## Product name

ECH1 antibody

WB: 1:500-1:5000

IHC: 1:20-1:200

## Specificity

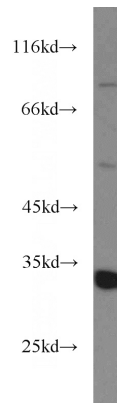
Human, Mouse, Rat; other species not tested.

IF: 1:10-1:100

## Antibody description

ECH1 Rabbit Polyclonal antibody. Positive WB detected in mouse liver tissue, HepG2 cells, Jurkat cells, K-562 cells, L02 cells, mouse heart tissue. Positive IHC detected in human pancreas cancer tissue. Positive IF detected in HepG2 cells. Observed molecular weight by Western-blot: 30-36kd

## Validations



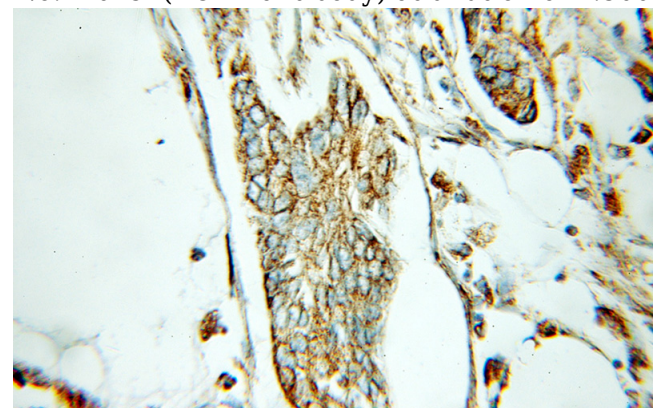
## Preparation

This antibody was obtained by immunization of ECH1 recombinant protein (Accession Number: NM\_001398). Purification method: Antigen affinity purified.

mouse liver tissue were subjected to SDS PAGE followed by western blot with Catalog No:110292(ECH1 antibody) at dilution of 1:500

## Formulation

PBS with 0.1% sodium azide and 50% glycerol pH 7.3.



## Storage

Store at -20°C. DO NOT ALIQUOT

## Clonality

Polyclonal

Immunohistochemical of paraffin-embedded human pancreas cancer using Catalog No:110292(ECH1 antibody) at dilution of 1:100 (under 10x lens)

## Ig Type

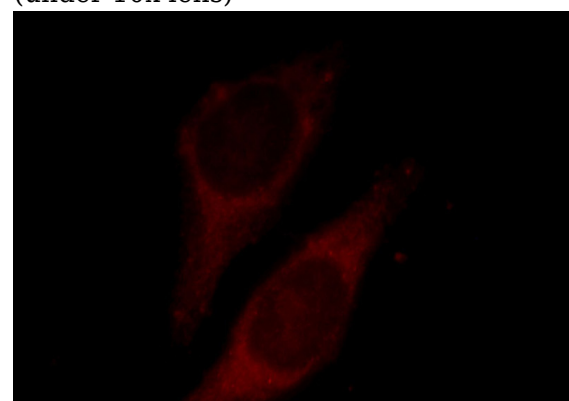
Rabbit IgG

## Applications

ELISA, WB, IHC, IF

## Dilutions

Recommended Dilution:



# ECH1 antibody



Catalog Number: 110292

---

Immunofluorescent analysis of HepG2 cells, using ECH1 antibody Catalog No:110292 at 1:25

dilution and Rhodamine-labeled goat anti-rabbit IgG (red).