

# EHBP1 antibody



Catalog Number: 110222

## Product name

EHBP1 antibody

Recommended Dilution:

WB: 1:500-1:5000

## Specificity

Human, Mouse, Rat; other species not tested.

IP: 1:200-1:2000

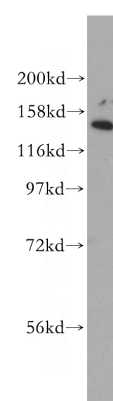
IHC: 1:20-1:200

## Antibody description

EHBP1 Rabbit Polyclonal antibody. Positive WB detected in HepG2 cells, mouse liver tissue. Positive IP detected in mouse liver tissue. Positive IHC detected in human testis tissue, human brain tissue, human kidney tissue, human lung tissue, human placenta tissue. Positive IF detected in HepG2 cells. Observed molecular weight by Western-blot: 140 kDa

IF: 1:20-1:200

## Validations



## Preparation

This antibody was obtained by immunization of EHBP1 recombinant protein (Accession Number: XM\_047443757). Purification method: Antigen affinity purified.

HepG2 cells were subjected to SDS PAGE followed by western blot with Catalog No:110222(EHBP1 antibody) at dilution of 1:500

## Formulation

PBS with 0.02% sodium azide and 50% glycerol pH 7.3.

## Storage

Store at -20°C. DO NOT ALIQUOT

## Clonality

Polyclonal

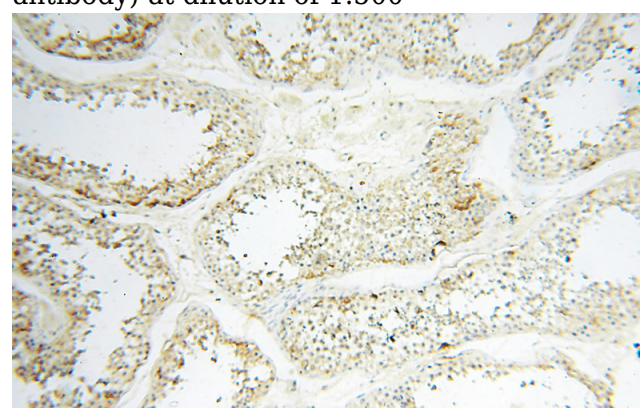
## Ig Type

Rabbit IgG

## Applications

ELISA, WB, IHC, IP, IF

## Dilutions

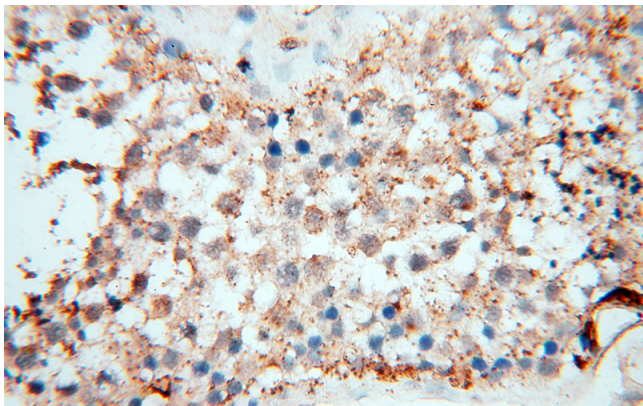


Immunohistochemical of paraffin-embedded human testis using Catalog No:110222(EHBP1 antibody) at dilution of 1:100 (under 10x lens)

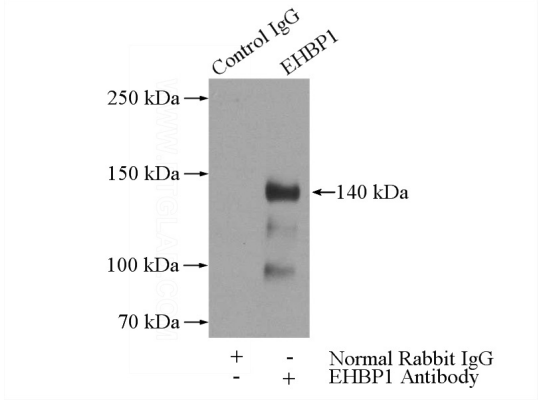
# EHBP1 antibody



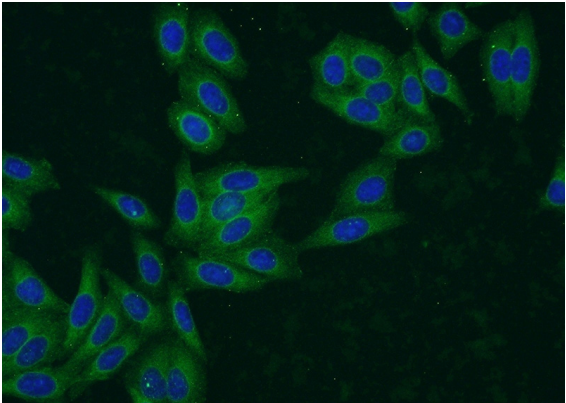
Catalog Number: 110222



Immunohistochemical of paraffin-embedded human testis using Catalog No:110222(EHBP1 antibody) at dilution of 1:100 (under 40x lens)



IP Result of anti-EHBP1 (IP:Catalog No:110222, 4ug; Detection:Catalog No:110222 1:500) with mouse liver tissue lysate 4000ug.



Immunofluorescent analysis of HepG2 cells using Catalog No:110222(EHBP1 Antibody) at dilution of 1:50 and Alexa Fluor 488-conjugated AffiniPure Goat Anti-Rabbit IgG(H+L)