

# Cytokeratin 14 antibody



Catalog Number: 109792

## Product name

Cytokeratin 14 antibody

## Immunogen

[Human KRT14 Recombinant protein \(GST tag\)](#)

## Specificity

Human, Mouse, Rat; other species not tested.

## Antibody description

Cytokeratin 14 Rabbit Polyclonal antibody. Positive IF detected in HepG2 cells, MCF-7 cells, mouse olfactory epithelium tissue. Positive IHC detected in human lung cancer tissue, human cervical cancer tissue, human kidney tissue, human liver tissue, human oesophagus cancer tissue, human placenta tissue, human prostate hyperplasia tissue, human skin cancer tissue, human skin tissue, mouse skin tissue. Positive WB detected in A431 cells, rat skin tissue. Positive IP detected in A431 cells. Observed molecular weight by Western-blot: 47-50 kDa

## Preparation

This antibody was obtained by immunization of Cytokeratin 14 recombinant protein (Accession Number: NM\_000526). Purification method: Antigen affinity purified.

## Formulation

PBS with 0.02% sodium azide and 50% glycerol pH 7.3.

## Storage

Store at -20°C. DO NOT ALIQUOT

## Clonality

Polyclonal

## Ig Type

Rabbit IgG

## Applications

ELISA, WB, IF, IP, IHC

## Dilutions

Recommended Dilution:

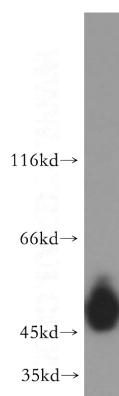
WB: 1:500-1:5000

IP: 1:500-1:5000

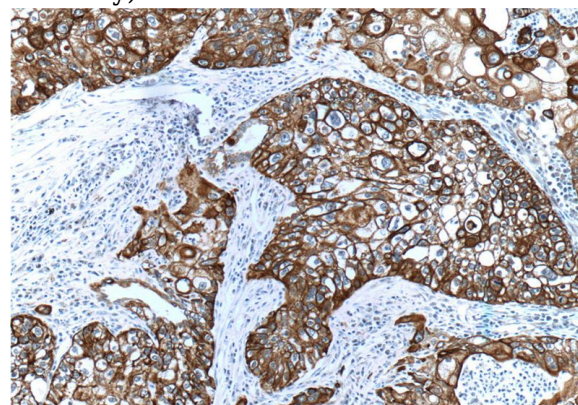
IHC: 1:20-1:200

IF: 1:20-1:200

## Validations



A431 cells were subjected to SDS PAGE followed by western blot with Catalog No:109792(KRT14 antibody) at dilution of 1:1000

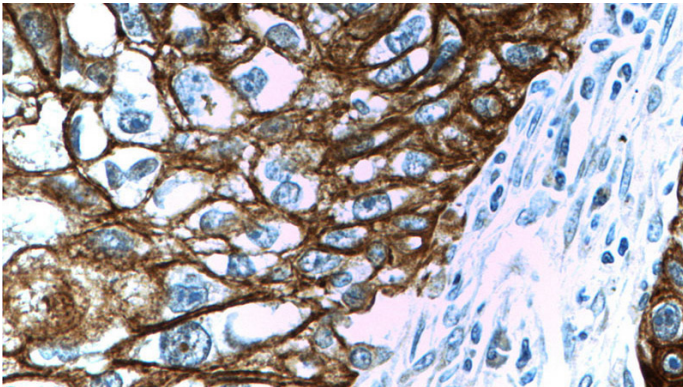


Immunohistochemistry of paraffin-embedded human lung cancer tissue slide using Catalog No:109792(KRT14 Antibody) at dilution of 1:200

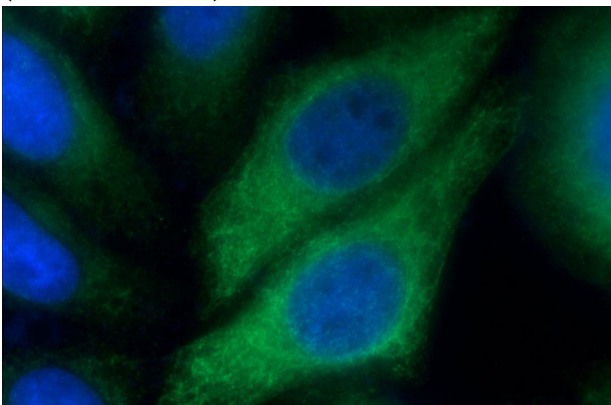
# Cytokeratin 14 antibody

Catalog Number: 109792

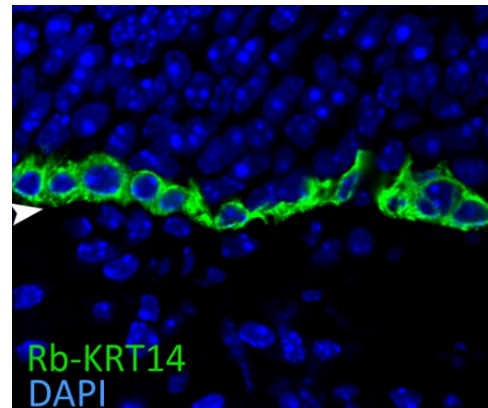
(under 10x lens)



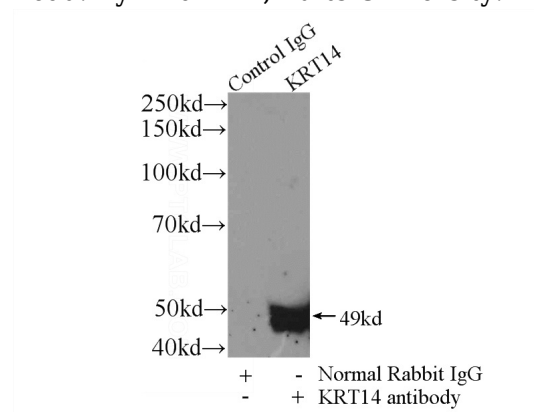
Immunohistochemistry of paraffin-embedded human lung cancer tissue slide using Catalog No:109792(KRT14 Antibody) at dilution of 1:200 (under 40x lens)



Immunofluorescent analysis of HepG2 cells using Catalog No:109792(KRT14 Antibody) at dilution of 1:50 and Alexa Fluor 488-conjugated AffiniPure Goat Anti-Rabbit IgG(H+L)



IF result of CK14 (Catalog No:109792, 1:400) with 1% PLP fixed basal quiescent stem cells of the adult mouse olfactory epithelium. (Green: CK14; Blue: DAPI). Basal lamina is marked by an arrow head. By Brian Lin, Tufts University.



IP Result of anti-KRT14 (IP:Catalog No:109792, 3ug; Detection:Catalog No:109792 1:1000) with A431 cells lysate 1200ug.