

# CTBP1 antibody



Catalog Number: 109624

## Product name

CTBP1 antibody

## Immunogen

[Human CTBP1 Recombinant protein \(GST tag\)](#)

## Specificity

Human, Mouse; other species not tested.

## Antibody description

CTBP1 Rabbit Polyclonal antibody. Positive IHC detected in human prostate cancer tissue. Positive WB detected in Jurkat cells, HeLa cells, HL-60 cells, mouse brain tissue, mouse skeletal muscle tissue, mouse thymus tissue. Positive IP detected in mouse brain tissue. Observed molecular weight by Western-blot: 48 kDa

## Preparation

This antibody was obtained by immunization of CTBP1 recombinant protein (Accession Number: NM\_001328). Purification method: Antigen affinity purified.

## Formulation

PBS with 0.1% sodium azide and 50% glycerol pH 7.3.

## Storage

Store at -20°C. DO NOT ALIQUOT

## Clonality

Polyclonal

## Ig Type

Rabbit IgG

## Applications

ELISA, WB, IHC, IP

## Dilutions

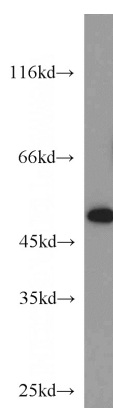
Recommended Dilution:

WB: 1:200-1:2000

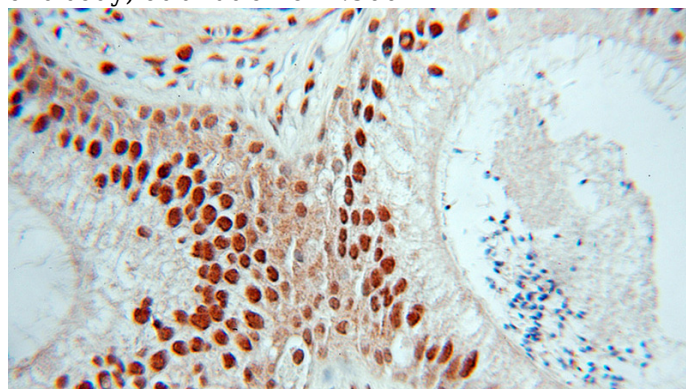
IP: 1:200-1:1000

IHC: 1:20-1:200

## Validations



Jurkat cells were subjected to SDS PAGE followed by western blot with Catalog No:109624(CTBP1 antibody) at dilution of 1:500

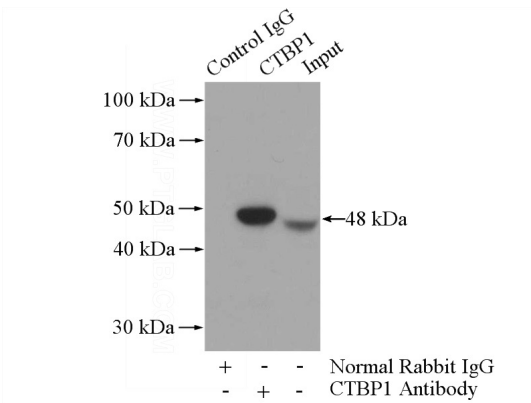


Immunohistochemical of paraffin-embedded human prostate cancer using Catalog No:109624(CTBP1 antibody) at dilution of 1:50 (under 40x lens)

# CTBP1 antibody

Catalog Number: 109624

---



IP Result of anti-CTBP1 (IP:Catalog No:109624, 3ug; Detection:Catalog No:109624 1:200) with mouse brain tissue lysate 4000ug.