

CSRP1 antibody

Catalog Number: 109608

Product name

CSRP1 antibody

Specificity

human, mouse, rat; other species not tested.

Antibody description

CSRP1 Rabbit Polyclonal antibody. Positive IHC detected in human cervical cancer. Positive WB detected in human stomach tissue. Observed molecular weight by Western-blot: 21kd

Preparation

This antibody was obtained by immunization of CSRP1 recombinant protein (Accession Number: NM_001193572). Purification method: Antigen affinity purified.

Formulation

PBS with 0.02% sodium azide and 50% glycerol pH 7.3.

Storage

Store at -20°C. DO NOT ALIQUOT

Clonality

Polyclonal

Ig Type

Rabbit IgG

Applications

ELISA, WB, IHC

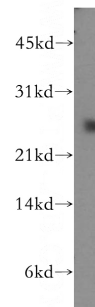
Dilutions

Recommended Dilution:

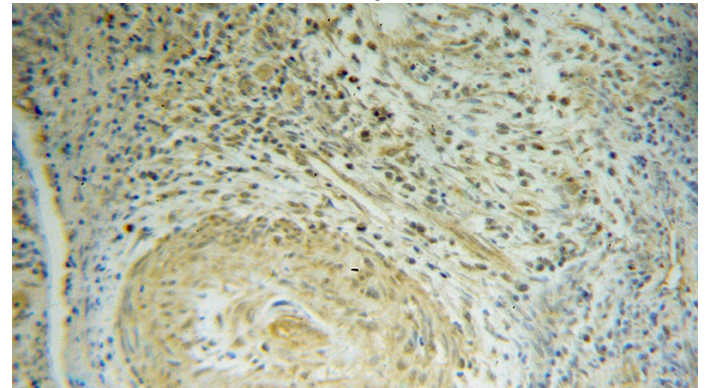
WB: 1:200-1:2000

IHC: 1:20-1:200

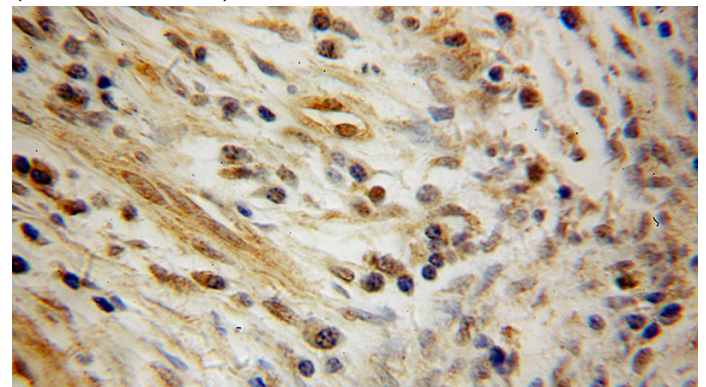
Validations



human stomach tissue were subjected to SDS PAGE followed by western blot with Catalog No:109608(CSRP1 antibody) at dilution of 1:500



Immunohistochemical of paraffin-embedded human cervical cancer using Catalog No:109608(CSRP1 antibody) at dilution of 1:100 (under 10x lens)



Immunohistochemical of paraffin-embedded human cervical cancer using Catalog No:109608(CSRP1 antibody) at dilution of 1:100 (under 40x lens)